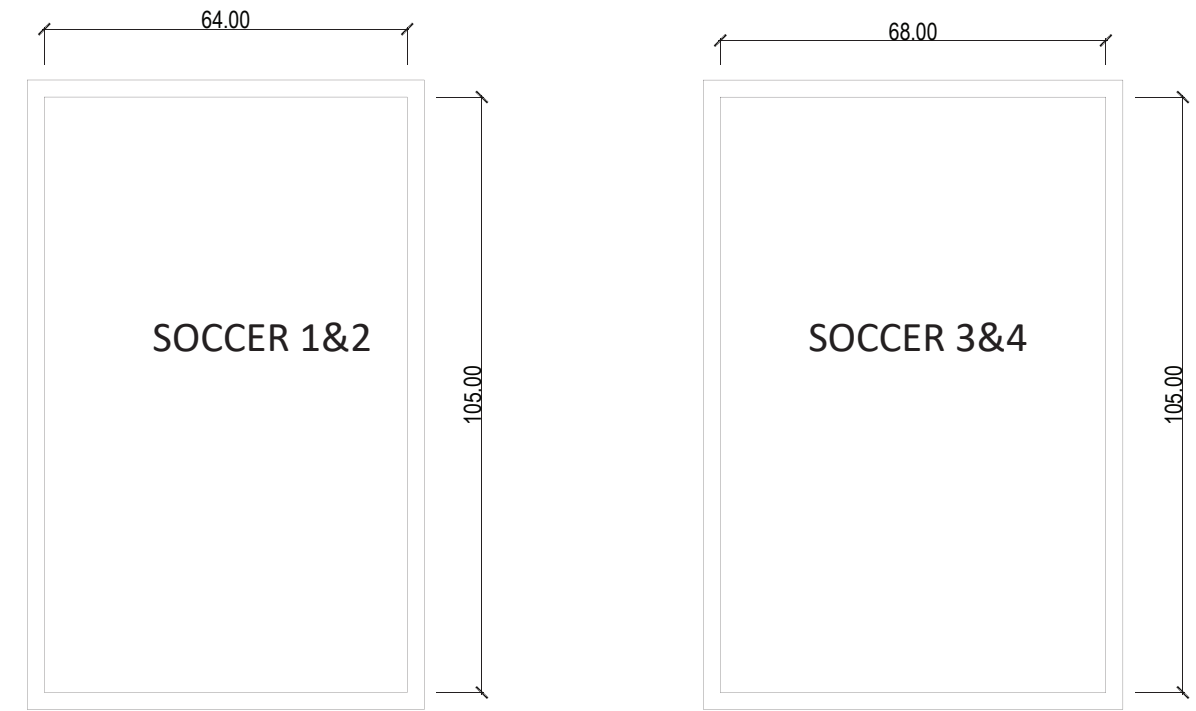
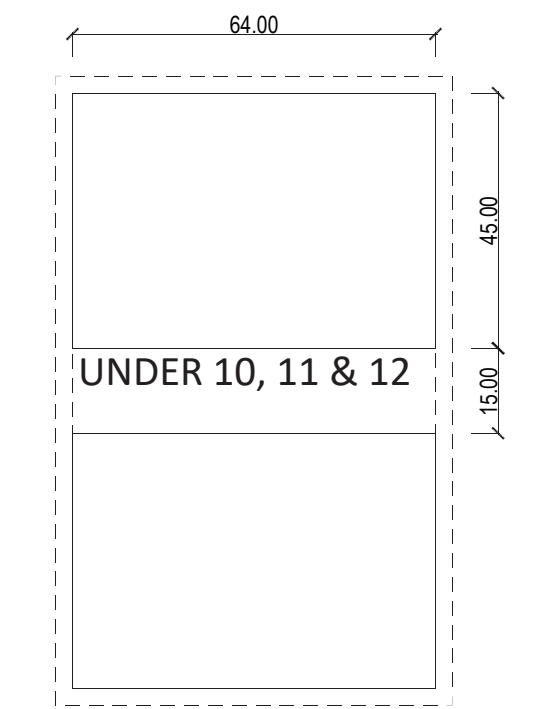
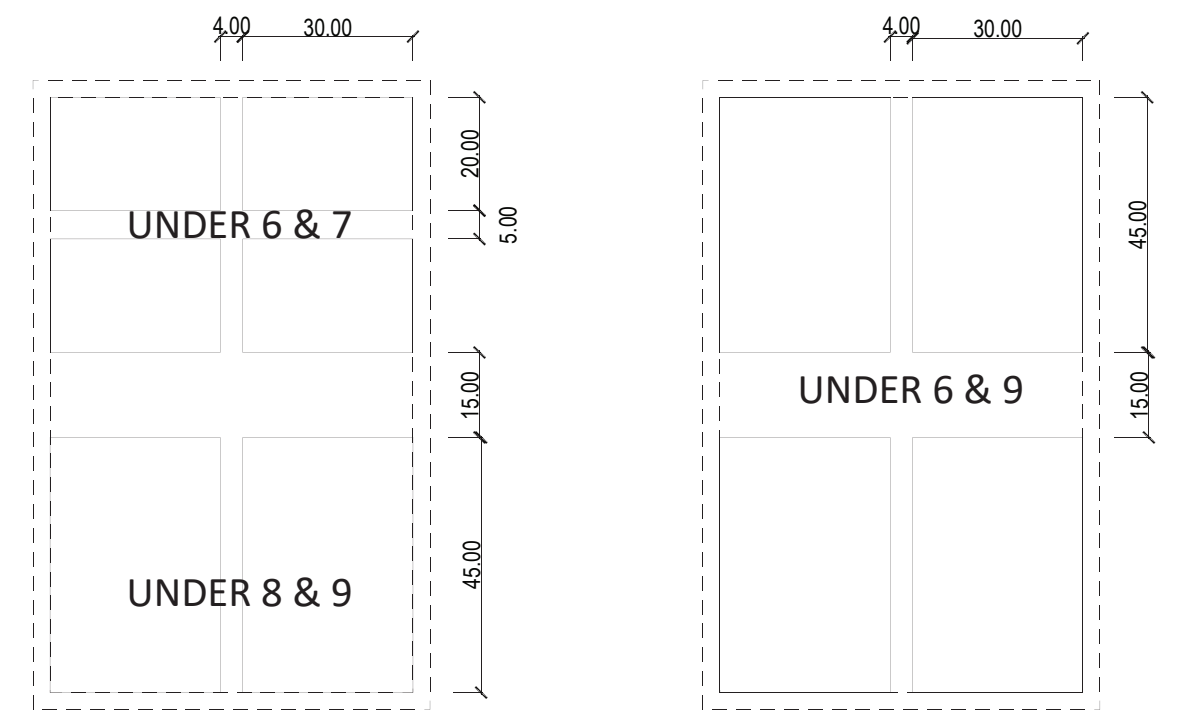


CRICKET GROUND DIMENSIONS



SOCCER GROUND DIMENSIONS



U6 - U12 SOCCER GROUND (WITHIN SOCCER 3&4)

LEGEND					
--- STAGE 1 EXTENT OF WORKS	PROPOSED DRAINAGE BASING/ WSUD AREA	A PROPOSED CARPARK	F PROPOSED PATHS	K SYNTHETIC CRICKET PITCH	P FUTURE IRRIGATION TANKS
PROPOSED CARPARK/ ACCESS/ EGRESS	INDICATIVE PARKING	B FUTURE PAVILION LOCATION	G PROPOSED ACCESS POINTS	L TURF CRICKET PITCHES (X3)	Q EXISTING TANKS & PUMP STATION
PROPOSED PLAYING FIELD/ GRASSED AREA	PROPOSED FIELD LIGHTING	C TEMPORARY CHANGE ROOMS/ TOLIETS	H PROPOSED LOADING BAY & FIELD ACCESS POINT	M CRICKET NETS (27 X 2.5M)	R EXISTING DRAINAGE BASIN
FUTURE BUILDING SITES	PROPOSED PATH	D POSSIBLE CAR PARK EXTENSIONS	I PROVISION FOR FUTURE ENCLOSED COURT FACILITY	N MINIMUM CLEARANCE OF 6.0M MAINTAINED BETWEEN PITCHES	S EXISWTING BUSHLAND TO BE RETAINED
PROPOSED LANDSCAPED AREAS	CLEARING PERMIT BOUNDARY	E PROPOSED DRAINAGE BASIN/ WSUD	J POSSIBLE OUTDOOR HARDCOURT EXTENSION	O 10M BUFFER	T OUTDOOR HARDCOURT FACILITY