



**SHIRE OF BUSSELTON**  
**LOCAL EMERGENCY MANAGEMENT**  
**ARRANGEMENTS**

**JUNE 2007**



**An Australian Government Initiative**

---

***Working Together to Manage Emergencies***

**This project funded through the  
Local Grants Scheme**

# SHIRE OF BUSSELTON EMERGENCY MANAGEMENT ARRANGEMENTS

## ACKNOWLEDGEMENT

The Shire of Busselton wishes to acknowledge that the Busselton Emergency Management Project of which these Arrangement form part has been wholly funded by the Australian Government through the "Working Together to Manage Emergencies" - Local Grants Scheme.

**SHIRE OF BUSSELTON**

**THESE ARRANGEMENTS HAVE BEEN PRODUCED  
UNDER THE AUTHORITY OF THE BUSSELTON  
LOCAL EMERGENCY MANAGEMENT COMMITTEE  
(LEMC)**

**DISCLAIMER**

The Shire of Busselton, Emergency Management Australia and the Australian Government make no representations about the suitability of the information contained in this document or any material related to this document for any purpose. The document is provided 'as is' without warranty of any kind to the extent permitted by law. The Shire of Busselton, Emergency Management Australia and the Australian Government hereby disclaim all warranties and conditions with regard to this information. Including all implied warranties and conditions of merchantability, fitness for particular purpose, title and non-infringement. In no event shall the Shire of Busselton, Emergency Management Australia or the Australian Government be liable for any special, indirect or consequential damages or any damages whatsoever resulting from the loss of use, data or profits, whether in an action of contract, negligence or other tortious action, arising out of or in connection with the use of information available in this document. This document or material related to this document could include technical inaccuracies or typographical errors.

# SHIRE OF BUSSELTON EMERGENCY MANAGEMENT ARRANGEMENTS

## CONTENTS

Acknowledgement .....	2
Disclaimer	3
Contents	4
Distribution List .....	6
Preface	7
Glossary	8
Abbreviations	11
Amendment Record .....	12
<b>PART 1 MANAGEMENT.....</b>	<b>13</b>
1.1 Authority .....	14
1.2 Date	14
1.3 Area Covered .....	14
1.4 Aim	16
1.5 Purpose	16
1.6 Objectives.....	16
1.7 Scope	17
1.8 Existing Plans And Arrangements .....	17
1.9 Agreements, Understandings And Commitments.....	17
1.10 Special Considerations.....	18
1.11 Financial Arrangements.....	18
1.12 Emergency Management Principles.....	18
2. GENERAL ARRANGEMENTS.....	19
2.1 Emergency Coordinator.....	19
2.2 Emergency Liaison Officer.....	20
2.3 Committee (LEMC).....	20
2.4 Incident Controller (IC/IM) .....	20
2.5 Operations Coordination Group (OCG).....	20
2.6 Hazard Management Agency (HMA) .....	20
2.7 Combat Agencies.....	21
2.8 Support Agencies.....	21
2.9 Emergency Coordination Centre (ECC) .....	22
2.10 Incident Control Centre.....	22
3. Activation .....	23
<b>PART 2 PLANNING .....</b>	<b>24</b>
2.1 Local Emergency Management Committee .....	25
2.2 Emergency Risk Management .....	25
Table 2 Identified Hazards .....	25
Table 3 Risk Register .....	27
<b>PART 3 RESPONSE.....</b>	<b>- 29 -</b>
Table 4: Hazards, Responsible Hma's, Appropriate State And Local Plans.....	30
Responsibilities Of Key Participating Organisations.....	31
Hazard Plan No. 1 Severe Storm/Tempest.....	- 35 -
Hazard Plan No. 2 Major Structural/Urban Fire .....	- 38 -
Hazard Plan No .3 Major Rural Fire .....	- 40 -
Hazard Plan No. 4 Major Road Transport Emergency .....	- 42 -
Hazard Plan No .5 Air Transport Emergency .....	- 44 -

# SHIRE OF BUSSELTON EMERGENCY MANAGEMENT ARRANGEMENTS

Hazard Plan No. 6 Busselton Jetty Fire Emergency Plan .....	- 45 -
Hazard Plan No. 7 Exotic Animal Diseases & Animal Welfare .....	47
Evacuation Plan (To be developed) .....	48
<b>PART 4 RECOVERY PLAN (To be developed).....</b>	<b>49</b>
<b>PART 5 EMERGENCY CONTACTS DIRECTORY .....</b>	<b>50</b>
<b>PART 6 TESTING, EXERCISING &amp; REVIEWING THE ARRANGEMENTS .....</b>	<b>56</b>
6.1 Testing and Exercising .....	56
6.2 Reviewing .....	56
6.3 Responsibility .....	57
<b>PART 7 SUPPORT PLANS (To be developed).....</b>	<b>58</b>
<b>APPENDICES .....</b>	<b>59</b>
Appendix 1 - Resource Schedule.....	60
Appendix 2 - Community & Recreation Centres .....	61
Appendix 3 - Major Schools Within The Shire Of Busselton .....	- 62 -62
Appendix 4 - Religious Buildings Within The Shire Of Busselton .....	63
Appendix 5 - Local Emergency Management Committee Members .....	64
Appendix 6 - Hazard Management Agencies.....	67
Appendix 7 - Shire Of Busselton Senior Officers .....	68
Appendix 8 - Maps of Shire of Busselton .....	69

# SHIRE OF BUSSELTON EMERGENCY MANAGEMENT ARRANGEMENTS

## DISTRIBUTION LIST

DISTRICT EMERGENCY MANAGEMENT COMMITTEE (DEMC)  
STATE EMERGENCY MANAGEMENT COMMITTEE (SEMC)  
**BUSSELTON LOCAL EMERGENCY MANAGEMENT COMMITTEE (LEMC)**  
Chairperson  
Executive Officer  
LEMC Members

## SHIRE OF BUSSELTON

Shire of Busselton - Chief Executive Officer  
Shire of Busselton - Director, Lifestyle Development  
Shire of Busselton - Director, Systems & Information  
Shire of Busselton - Director, Community Infrastructure  
Shire of Busselton - Director, Governance & Strategic Projects  
Shire of Busselton - Director, Director, Community & Organisational Development  
Shire of Busselton - Manager, Community Development  
Shire of Busselton - Manager, Environmental Services  
Shire of Busselton - Coordinator, Environmental Health  
Shire of Busselton - Coordinator, Ranger & Fire Services  
Shire of Busselton - Manager, Building  
Shire of Busselton - Manager, Asset  
Shire of Busselton - Manager, Infrastructure Services  
Shire of Busselton - Manager, Infrastructure Development  
Busselton and Dunsborough Public Libraries  
Emergency Contact & Resources List

## POLICE

South West District Police Officer  
Officer in Charge, Busselton Police  
Officer in Charge, Dunsborough Police  
Officer in Charge, Margaret River Police  
Officer in Charge, Nannup Police

## LOCAL GOVERNMENT

Shire of Augusta/Margaret River  
City of Bunbury  
Shire of Capel  
Shire of Donnybrook/Balingup  
Shire of Nannup

## FESA

South West District Office  
Fire & Rescue Service - Busselton  
Fire & Rescue Service - Dunsborough  
SES Busselton Unit  
Busselton Volunteer Marine Rescue  
Naturaliste Volunteer Marine Rescue

## OTHERS

Australian Red Cross  
Busselton District Hospital  
Busselton Water  
Department for Planning & Infrastructure  
Department of Environment & Conservation - Busselton District Office  
Department for Child Protection (Busselton)  
Main Roads  
St John Ambulance (Busselton Sub-branch)  
St John Ambulance (Dunsborough Sub-branch)  
Water Corporation

F:\Ranger & Fire Services\Emergency Management Review Project\Ron Kinson\Busselton Emergency Arrangements  
Aug.07.doc

# SHIRE OF BUSSELTON EMERGENCY MANAGEMENT ARRANGEMENTS

Emergency Management Australia

## PREFACE

The Busselton Emergency Management Arrangements completely replace all previous Emergency Management Arrangements that existed for the Shire of Busselton including the Cape Naturaliste Emergency Management Plan.

These Arrangements are contained in seven parts:

- Part 1 - Management
- Part 2 - Planning
- Part 3 - Response and Resource Schedules
- Part 4 - Recovery Plan (to be developed)
- Part 5 - Emergency Contacts Directory
- Part 6 - Testing, Exercising and Reviewing the Arrangements
- Part 7 - Support Plan

# SHIRE OF BUSSELTON EMERGENCY MANAGEMENT ARRANGEMENTS

## GLOSSARY

The following definitions apply throughout this document:

**COMBAT AGENCY** - an organisation which, because of its expertise and resources, is responsible for performing a task or activity such as fire fighting, rescue, temporary building restoration, evacuation, containment of oil spills, monitoring of radioactive materials. An emergency operation may involve a number of Combat Agencies.

**COMMAND** - the direction of members and resources of an organisation in the performance of the organisations role and tasks. Authority to command is established in legislation or by agreement within an organisation. **COMMAND** relates to **ORGANISATIONS** and operates **VERTICALLY** within an **ORGANISATION**.

**CONTROL** - the overall direction of emergency management activities in a designated emergency or disaster situation. Authority for control is established in legislation or in an emergency management plan, and carries with it the responsibility for tasking and coordinating other organisations in accordance with the needs of the situation. **CONTROL** relates to **SITUATIONS** and operates **HORIZONTALLY** across **ORGANISATIONS**.

**CONTROLLER** - the person responsible for the overall management of a major emergency or disaster. In all instances the senior officer of the Hazard Management Agency will perform this function.

**CO-ORDINATION** - the bringing together of organisations and elements to ensure an effective response, primarily concerned with the systematic acquisition and application of resources (organisation, human resources, and equipment) in accordance with the requirements imposed by the threat or impact of an emergency.

**EMERGENCY** - means the occurrence or imminent occurrence of a hazard which is of such nature or magnitude that it requires a significant and coordination response.

**NOTE:** The terms "emergency" and "disaster" are used nationally and internationally to describe events which require special arrangements to manage the situation. "Emergencies" or "disasters" are characterized by the need to deal with the hazard and its impacts on the community.

**EMERGENCY COORDINATOR** - that person designated by the Commissioner of Police to be the District or Local Emergency Coordinator with ensuring that the roles and functions of the respective District or Local Emergency Management Committee are performed, and assisting the Hazard Management Agency in the provision of a coordinated multi-agency response during Incidents and Operations. At the District level it is the District Police Officer. At the local level it is the Senior Police Officer responsible for the police sub-district.

Where there is more than one Police sub-district in a local government district each Officer in Charge will be the Local Emergency Coordinator in respect to that area of the local government for which they are responsible. Each Local Emergency Coordinator will be a member of the Local Emergency Management Committee established by the local government in whose district the Police sub-district is situated.

## SHIRE OF BUSSELTON EMERGENCY MANAGEMENT ARRANGEMENTS

**Note:** This designation shall apply until such time as the State Emergency Coordinator appoints a local emergency coordinator for the local government district the Shire of Busselton in accordance with Section 37 of the Emergency Management Act 2005.

**EMERGENCY CO-ORDINATION CENTRE** - a facility, where the Emergency Coordinator is located and from which co-ordination of all support to the Controller is managed. There are four types of co-ordination centres State, Region, Local and Forward Co-ordination Centres.

**EMERGENCY MANAGEMENT** - the management of the adverse effects of an emergency including -

- a. prevention - the mitigation or prevention of the probability of the occurrence of, and the potential adverse effects of, an emergency;
- b. preparedness - preparation for response to an emergency;
- c. response - the combating of the effects -e for casualties, reduction of further damage, and help to speed recovery; and
- d. recovery - the support of emergency affected communities in the reconstruction and restoration of physical infrastructure, the environment and community, psychosocial and economic wellbeing.

**EMERGENCY RISK MANAGEMENT (ERM)** – is a systematic process that produces a range of measures that, on implementation, contribute to the safety and wellbeing of communities and the environment. This process considers the likely effect of hazardous events and the measures by which they can be minimised.

**Hazard** - a situation or condition with potential for loss or harm to the community or the environment.

**Risk** - a concept used to describe the likelihood of harmful consequences, arising from the interaction of hazards, communities and the environment.

**"FUNCTION" SUPPORT COORDINATOR** - that person appointed by an organisation or committee to be the Coordinator of activities associated with particular function, eg. Welfare Coordinator, Medical Coordinator, etc, and includes the coordinating functions of other organisation that support that particular function, eg, Red Cross in the State Welfare Plan.

**HAZARD** - a situation or condition with potential for loss or harm to the community or the environment.

**HAZARD MANAGEMENT AGENCY** - that organisation which, because of its legislative responsibility or specialised knowledge, expertise and resources is responsible for ensuring that all emergency management activities pertaining to the prevention of, preparedness for, response to and recovery from a specific hazard are undertaken. Such organisations are either designated by legislation or detailed in State level emergency management plans.

**INCIDENT** – an Emergency, which impacts upon a localised community or geographical area but not requiring the co-ordination and significant multi-agency emergency management activities at a district or state level.

## SHIRE OF BUSSELTON EMERGENCY MANAGEMENT ARRANGEMENTS

**INCIDENT CONTROLLER** – the person designated by the relevant Hazard Management Agency, responsible for the overall management and control of an incident and the tasking of agencies in accordance with the needs of the situation.

**RISK** - a concept used to describe the likelihood of harmful consequences, arising from the interaction of hazards, communities and the environment.

**RISK MANAGEMENT** – the systematic application of management policies, procedures and practices to the task of identifying, analysing, evaluating, treating and monitoring risk. Refer to AS/NZS Standard 4360:2004 (Risk Management).

**SUPPORT ORGANISATION** - an organisation whose response in an emergency is either to restore essential services (e.g. Busselton Water, Western Power, Water Corporation of WA, Main Roads WA etc) or to provide such support functions as welfare, medical and health, transport, communications, engineering, etc.

# SHIRE OF BUSSELTON EMERGENCY MANAGEMENT ARRANGEMENTS

## ABBREVIATIONS

<b>DCD</b>	<b>Department for Community Development</b>
<b>DEMC</b>	<b>District Emergency Management Committee</b>
<b>ECC</b>	<b>Emergency Co-ordination Centre</b>
<b>EM</b>	<b>Emergency Management</b>
<b>ERM</b>	<b>Emergency Risk Management</b>
<b>FESA</b>	<b>Fire and emergency Services Authority of Western Australia</b>
<b>FESA- SES</b>	<b>State Emergency Service</b>
<b>FESA - FRS</b>	<b>Fire and Rescue Service</b>
<b>FESA -BFS</b>	<b>Bush Fire Service</b>
<b>HMA</b>	<b>Hazard Management Agency</b>
<b>LEMC</b>	<b>Local Emergency Management Committee</b>
<b>LG</b>	<b>Local Government</b>
<b>OIC</b>	<b>Officer in Charge</b>
<b>SEMC</b>	<b>State Emergency Management Committee</b>
<b>SOP'S</b>	<b>Standard Operating Procedures</b>
<b>WAP</b>	<b>Western Australia Police</b>

## SHIRE OF BUSSELTON EMERGENCY MANAGEMENT ARRANGEMENTS

Amendments to these Arrangements, or suggestions for their improvement should be directed to:

**Co-ordinator, Ranger and Fire Services, Shire of Busselton**  
**2 Southern Drive, Busselton, WA 6280 or by email: shire@busselton.wa.gov.au**

### AMENDMENT RECORD

AMENDMENT		DETAILS OF AMENDMENT	AMENDED BY: Initials & Date
No.	DATE		

**PART 1**

**MANAGEMENT**

# SHIRE OF BUSSELTON EMERGENCY MANAGEMENT ARRANGEMENTS

## PART 1 MANAGEMENT

### 1.1 Authority

These Arrangements have been prepared in accordance with section 41(1) of the Emergency Management Act (2005) and endorsed by the Busselton Local Emergency Management Committee. They have been tabled for the information of the Shire of Busselton Council and for comment with the South West District Emergency Management Committee.

### 1.2 Date

The content of these arrangements was endorsed by the Busselton Local Emergency Management Committee on 12 June 2007.

### 1.3 Area Covered

The area covered by these Arrangements is the geographic area of the Shire of Busselton under the Local Government Act 1995.

The Shire of Busselton lies within the South West of Western Australia approximately 220km south of Perth and has a population of 28,000. (However numbers double on any one day during the various peak tourism periods). Its Administration Centre is located in Southern Drive near to the town centre. The Shire covers an area of approximately 1454 square kilometres. In the western sector of the Shire are the townships of Dunsborough, Yallingup and Eagle Bay.

#### ADJOINING LOCAL AUTHORITIES:

Shire of Capel - to the east  
Shire of Donnybrook-Balingup - to the north-east  
Shire of Augusta-Margaret River - to the south  
Shire of Nannup - to the south-east.

#### ACCESS

The major access road to the Shire of Busselton from Perth is Bussell Highway via the City of Bunbury. Bussell Highway continues south to the Town of Margaret River and terminates in the Town of Augusta. The most direct road linking Busselton to the towns of Dunsborough and Yallingup is by Caves road, a single carriageway. Caves Road continues south to Margaret River and Augusta and in so doing provides a popular scenic route for tourists. Internally the Shire is serviced by 822 kilometres of sealed roads and 332 kilometres of unsealed roads of which the Shire manages 1102 kilometres and the remainder by Main Roads WA.

#### TOPOGRAPHY

The landscape of the Shire of Busselton consists of a broad low-lying coast plain, the Swan Coastal Plain, which runs parallel to coast-line of Geographe Bay to Dunsborough in the west where it meets the Margaret River Plateau. The plain extends eastward to the Blackwood Plateau and inland to the Whicher Range. At the extreme west of the Shire situated between the Margaret River Plateau and the

## SHIRE OF BUSSELTON EMERGENCY MANAGEMENT ARRANGEMENTS

western coastline of the Indian Ocean is the Leeuwin-Naturaliste Ridge, a narrow limestone formation, which runs parallel with the coast and extends from Cape Naturaliste to the south. It is on this ridge that the township of Yallingup is located.

Significant areas of the Swan Coastal Plain are very low-lying and subject to water-logging in winter. It is drained by a number of natural water courses and man-man drainage systems constructed over the years to manage water levels. Much of the coastal plain has been cleared for rural and urban development.

Until recently growth of the Busselton and Dunsborough townsites had mainly been confined in a linear form to the coastline of Geographe Bay.

Expansion of the Busselton townsite had been shaped by the extensive wet-lands of the Vasse-Wonnerup and Broadwater estuaries which are under-water for long periods of the year. However, the increasing demand for new housing and tourist accommodation generated by the Shire's consistent annual population growth rate of 4.4% has resulted in the encroachment of urban development on former primary production areas adjacent to both towns. This change in land use will continue in the future with the development of the Vasse and Ambergate localities.

The combined appeal of the Shire's attractive rural environment, proximity of the coast and a mild climate has brought an increase in demand for country lifestyle housing and tourist accommodation which has led to the sub-division of cropping and grazing land in the Yallingup, Cape Naturaliste, Wilyabrup and Quindalup localities for rural residential purposes.

### CLIMATE

The climate of the Shire is described as Mediterranean having cool, wet winters with the long-term, average annual rainfall of ranging from 825 to 1000 millimetres and warm to hot summers, which are occasionally humid with the passage of cold fronts coming in from the Indian Ocean. In spring and summer the dominant wind directions are from the south and from the north-west in winter.

Over the last 30 years there has been a marked reduction in annual rainfall and a variation in the rainfall patterns.

### SHIRE POPULATION

**TABLE 1 - Shire Population (2001 ABS Census Data)**

<b>LOCALITY</b>	<b>CENSUS 2001</b>	<b>ESTIMATED 2006</b>
Busselton	15,400	18,000
Dunsborough	2,970	4,200
Siesta Park / Marybrook	180	210
Yallingup	190	220
Eagle Bay	125	160
Vasse village	80	100

## SHIRE OF BUSSELTON EMERGENCY MANAGEMENT ARRANGEMENTS

Carbanup River village	45	60
<b>URBAN Total</b>	<b>18,980</b>	22,950
<b>RURAL Total</b>	<b>4,357</b>	5,050
<b>SHIRE TOTAL</b>	<b>23,337</b>	28,000

TABLE 2 - Age distribution for population of the Shire in 2001 listed below:

Age Range	Number of People	% of Population
0 - 4	1,657	7.10
5-19	5,426	23.25
20-54	10,875	46.60
55 +	5,379	23.05

### SHIRE OF BUSSELTON ADMINISTRATION CENTRE

The Shire of Busselton's Main Administration Centre is located at Southern Drive Busselton and is the prime headquarters for all the Shire's municipal activities.

The Works and Services Depots accommodating plant, vehicles, equipment storage and workshop facilities are located in Barlee Street, Busselton and Vidler Road Dunsborough. The Shire operates and administers two Community and Recreation Centres. The Geographe Leisure Centre is situated at Recreation Lane (off Queen Elizabeth Avenue), Busselton and the Naturaliste Community Centre located at Dunsborough Lakes Drive, Dunsborough.

#### 1.4 Aim

The aim of this plan is to detail the Emergency Management arrangements for emergency events, which may occur within the Shire of Busselton.

#### 1.5 Purpose

The purpose of these emergency management arrangements is to document the management of identified risks and to provide specific details on planning, response activities of the Shire of Busselton, Hazard Management Agencies (HMA's) and other agencies.

#### 1.6 Objectives

The objectives of this plan are to:

1. Describe risks and hazards, their likely effects and prescribe risk treatment options

## **SHIRE OF BUSSELTON EMERGENCY MANAGEMENT ARRANGEMENTS**

2. Promote effective liaison between all Hazard Management Agencies, emergency services and supporting agencies, which may become involved in emergency management.
3. Identify primary and secondary emergency operations centres.
4. Establish and implement public warning systems.
5. Maintain a current contact list for participating agencies and organisations.
6. Provide a framework for recovery operations.
7. Provide arrangements for testing, evaluation and maintenance of these arrangements.
8. Provide a Resource and Contacts Register to assist the community in prevention, preparedness, response and recovery.

### **1.7 Scope**

The scope of these Arrangements is to ensure that appropriate strategies are in place to minimise the adverse effects on the community and ensure the best possible outcomes are delivered for the community in the long term.

To ensure the best possible outcomes, for the Shire of Busselton, a comprehensive understanding of the hazards, community, environment and the community of interaction between consequences and the plan are required.

### **1.8 Existing Plans and Arrangements**

This document covers the key arrangements to enable the delivery of integrated and coordinated emergency management activities of Hazard Management, Combat and Support Agencies to the Shire of Busselton. However it is not possible to contain all of the existing plans and arrangements or to provide too much detail within this document.

Refer to Table 2 displayed in Part Three - Response for existing plans and arrangements held by the Shire of Busselton.

### **1.9 Agreements, Understandings and Commitments**

The Shire of Busselton through its LEMC in conjunction with DCD will endeavour to enter into Memoranda of Understanding with the surrounding Local Authorities for reciprocal use of various public properties and resources to be used in the event of a large scale incident.

The Shire of Busselton through its LEMC in conjunction with DCD will endeavour to enter into a Memoranda of Understanding with administrators/proprietors of facilities deemed suitable as evacuation centres for the use in event of the need to evacuate effected member of the community.

The Shire of Busselton through its LEMC will develop, implement and support and maintain inter-municipality cooperation in regards to resource sharing and mutual support in times of disaster.

# SHIRE OF BUSSELTON EMERGENCY MANAGEMENT ARRANGEMENTS

The Busselton Emergency Management Arrangements will be provided to other LG's within the South West Emergency Management District to accommodate better understanding and knowledge sharing with all LG's.

## 1.10 Special Considerations

The Shire of Busselton has a number of considerations that will have an impact on the implementation of these emergency management arrangements in the times of emergency:

- a) Severe Storms & flooding primarily from May to September;
- b) Rural Fires from November to May;
- c) Major Road Transport Accidents;
- d) Structural/Urban Fire;
- e) Large numbers of tourists, intrastate, interstate, and international, visiting and travelling throughout the Shire, particularly during the summer and school holiday periods with the consequence of placing greater demands on the resources of local government and emergency services;
- f) Annual "School Leavers' Week" in late November.

## 1.11 Financial Arrangements

Whilst recognising the provisions of the State Emergency Management Committee Policy Statement Number 13 - Funding for Multi-Agency Emergencies (SEMC PS 13), the Shire of Busselton is committed to spending such necessary funds as required ensuring the safety of the Shire's residents and visitors.

SEMC PS 13 section 4(c) states: "Where costs are incurred in delivering services or resources at the request of the Hazard Management Agency concerned, which are not part of the agency's core functions and there are not prior agreements as to funding responsibilities, then such costs shall be met by that Hazard Management Agency."

## 1.12 Emergency Management Principles

The Shire of Busselton follows the general emergency management principles as promoted by Emergency Management Australia (EMA), Canberra and detailed in the State Emergency Management Advisory Committee (SEMC) Policy Statement No.3, 4 and 7. These principles involve 4 distinct considerations for each identified hazard. These principles are:

- Prevention
- Preparedness
- Response
- Recovery

# SHIRE OF BUSSELTON EMERGENCY MANAGEMENT ARRANGEMENTS

## Prevention

The Shire, in conjunction with the responsible Authorities, actively promotes measures to prevent or minimise the effects of emergencies within the Shire. These measures include the enforcement of Legislation, Regulations and Local Laws, Town Planning, Controlled Burning and public education and awareness campaigns.

## Preparedness

The Shire and Statutory Authorities actively promote preparedness for emergency situations by:

- Preparing Plans
- Training emergency service personnel
- Fostering volunteer emergency service groups
- Fostering liaison and exercises between emergency services
- Fostering public awareness programmes
- Maintenance of registers

## Response

The Shire makes its staff and resources available for response to emergency situations. This Plan details the general response by the Shire in support of the Statutory Authorities.

## Recovery

In the event of a large scale emergency or disaster affecting the community, full resources of the Shire, in conjunction with other government departments will be directed towards rapid restoration of services and facilities.

## 2. General Arrangements

Within the context of this Plan the following general arrangements will apply:

### 2.1 Emergency Coordinator

The Western Australian Police is the designated Emergency Coordinator for all emergencies. The Senior Police Officer attending any incident automatically becomes the Emergency Coordinator at that incident. The Emergency Coordinator is the Officer in Charge of Busselton or Dunsborough (or another duly appointed Police Officer).

**Note:** This designation shall apply until such time as the State Emergency Coordination appoints a local emergency coordinator for the local government district of Busselton in accordance with Section 37 of the Emergency Management Act 2005.

# SHIRE OF BUSSELTON EMERGENCY MANAGEMENT ARRANGEMENTS

## 2.2 Emergency Liaison Officer

*The position of Emergency Liaison Officer for the Shire of Busselton is to be considered and determined by the Shire.*

## 2.3 Committee (LEMC)

The Busselton Local Emergency Management Committee (LEMC), or designated members, may be activated to provide advice to the Emergency Coordinator. The Committee Contact Details are Appendix 5.

## 2.4 Incident Controller (IC/IM)

That person responsible for the overall management of a major emergency or disaster. In most instances this function will be performed by the Senior Hazard Management Agency Officer.

## 2.5 Operations Coordination Group (OCG)

The role of the OCG is to assist the HMA to manage emergencies. The composition of the OCG will vary depending on the nature and magnitude of the emergency and is detailed, where possible, in the Hazard Plans at Part 2. It will normally include the following core members:

- (1) The Emergency Coordinator;
- (2) The Chair and/or Deputy of the Local Emergency Management Committee;
- (3) The Executive Officer to the Local Emergency Management Committee;
- (4) Relevant HMA(s);
- (5) Recovery Coordinator; and
- (6) Support and other organisations as appropriate.

The OCG will assemble when requested by the HMA or the Local Emergency Coordinator.

## 2.6 Hazard Management Agency (HMA)

Certain agencies have been identified, through legislation or government direction, as being responsible for all emergency management activities pertaining to the prevention of, preparedness for, response to, and recovery from a specific hazard are undertaken. For example, the SES is responsible for the management of the Prevention, Preparedness, Response and Recovery programmes associated with Severe Storms.

The Hazard Management Agency is also responsible for:

- (1) appointing an Incident Controller;
- (2) ensuring the safety of all participants;
- (3) contributing to a post-operations report.

It is to be noted that in addition to the above responsibilities the Hazard Management Agency is responsible for provision of meals for emergency workers [WESTPLAN -WELFARE Clause 2.04 sub-clause b. (4)].

# SHIRE OF BUSSELTON EMERGENCY MANAGEMENT ARRANGEMENTS

## 2.7 Combat Agencies

Within each hazard certain agencies have a requirement, by statute or government direction, to perform certain tasks or activity, eg. Fire fighting, temporary building restoration, evacuation. The following examples are well known:

- Fire Fighting - F&RS, BFS& DEC.
- Traffic & Crowd Control - WAP.
- Rescue - F&RS, SES. (Cabinet Minute direction).
- First Aid - St John Ambulance & Medical Services.

Combat Agencies are responsible for:

- a) executing combative action in accordance with their statutory responsibilities;
- b) managing their own resources; and
- c) contributing to a post operations report;

Where two or more combat agencies perform the same task during the same incident, one will be designated the Hazard Management Agency. This will be determined as the situation dictates.

Each Combat Agency will control the response to an emergency from an Incident Control Centre. These Centres will be identified by the Hazard Management Agency depending upon the type of incident involved.

## 2.8 Support Agencies

A Support Organisation is an organisation with whose response in an emergency is to provide support functions such as welfare, medical and health, communications, engineering, essential services, etc. Support Organisations report to either the designated Incident Manager or the Emergency Co-ordinator as appropriate to the incident.

Support Organisations are responsible for:

- a) Restoring essential services affected by the emergency;
- b) Providing "function" support as part of the tactical plan, eg. Department for Child Protection to provide welfare services

The following examples are well known:

- Health and Medical Services - Department of Health, St John Ambulance;
- Alinta Gas, Busselton Water, Telstra, Water Corporation, Western Power;
- Welfare Services - Australian Red Cross, Department for Child Protection; and
- Resources - Respective Hazard Management Agencies, Shire of Busselton

# SHIRE OF BUSSELTON EMERGENCY MANAGEMENT ARRANGEMENTS

## 2.9 Emergency Coordination Centre (ECC)

The focal point for the coordination for an emergency or disaster is the Emergency Coordination Centre (ECC). The Local ECC for the Shire of Busselton is:

<b>1</b>	<b>Busselton Police Station, 20 Stanley Street, Busselton</b>
Alternative location:	
<b>2</b>	<b>Dunsborough Police Station, Naturaliste Terrace, Dunsborough</b>

## 2.10 Incident Control Centre

Each Hazard Management Agency will control the response to an emergency from an Incident Control Centre. These will be identified by the Hazard Management Agency depending upon the type of incident involved eg Storm, Bush Fire, Major Structural /Urban Fire, Major Road Transport Emergency etc.

The Incident Control Centres are nominated in the various hazard plans. In certain circumstances a Field Headquarters may be established to provide on site command and control. On these occasions the Emergency Coordinator may be required to attend the Incident Control Centre or Field Headquarters or provide a Police Liaison Officer to these facilities.

# SHIRE OF BUSSELTON EMERGENCY MANAGEMENT ARRANGEMENTS

## 3. Activation

### STAGES OF ACTIVATION:

The stages of activation will vary in terms of time and space and the nature of each threat. The stages however, will generally conform to the following, except that in an impact type situation, they then take place simultaneously.

#### Stage 1 - Alerting

- Immediately a warning is received the Local Emergency Coordinator (LEC) notifies the Hazard Management Agency (HMA) concerned.
- The HMA is then to decide on the need to warn the Emergency Management Organisation and the Public.
- Preliminary preparations take place.

#### Stage 2 – Standby

- Issued by the HMA or LEMC when a possible emergency situation is considered imminent.
- The key support agencies are prepared for support and assistance to HMA.
- Further warnings to the public are issued if necessary.

#### Stage 3 - Call Out

- Issued by the HMA.
- Resources are deployed on instructions according to the need of the situation.

#### Stage 4 - Stand Down

- To be decided upon by the HMA, depending on the situation at the time.
- Standing down is to be a gradual process to permit an orderly handing-over of responsibilities (recovery operations).
- Debriefing arrangements are to be detailed at the time.

**PART 2**

**PLANNING**

# SHIRE OF BUSSELTON EMERGENCY MANAGEMENT ARRANGEMENTS

## PART 2 - PLANNING

### 2.1 Local Emergency Management Committee

The Local Emergency Management Committee has been established to oversee, plan, and test the local emergency management arrangements.

Membership of LEMC is constituted of representatives of those agencies, organisations and community groups with expertise relevant to the identified hazards and risks.

As provided by Section 39 of Emergency Management Act (2005) the functions of the LEMC are:

- to advise and assist the local government in ensuring that local emergency management arrangements are established for its district;
- to liaise with public authorities and other persons in the development, review and testing local emergency management arrangements; and
- to carry out other emergency management activities as directed by SEMC or prescribed by the regulations.

### 2.2 Emergency Risk Management

To determine the emergencies that are likely to occur in the Shire of Busselton, the Shire of Busselton has undertaken a risk assessment in 2006/2007 utilising the Emergency Risk Management model based on the A/NZ Standard 4360:2004.

The output of this process has resulted in the establishment of the Shire of Busselton Risk Register and the collation of Risk Treatment Plans recommended for implementation by respective hazard management or support agencies.

The following table lists the hazards that may affect the Shire of Busselton:

**TABLE 2: Identified Hazards**

1. Severe storm	4. Structural/Urban fire
2. Rural fire	5. Major road transport crash
3. Flood	

Table 3 below displays the Shire of Busselton Risk Register in order of the evaluated risk level and priority for assessment of treatment options to determine effective measures and strategies to mitigate the risk.

WA Police Service requested the sub-committee to consider Terrorism as apart of review.

## **SHIRE OF BUSSELTON EMERGENCY MANAGEMENT ARRANGEMENTS**

The ERM sub-committee decided that in view of current international and national events involving terrorist activities it would be fitting to assess the risks associated with this emergency, hence the inclusion of "Terrorist Activities" in the top six hazards to be assessed.

## SHIRE OF BUSSELTON EMERGENCY MANAGEMENT ARRANGEMENTS

**TABLE 3 - RISK REGISTER**

### SHIRE OF BUSSELTON RISK REGISTER - PRIORITY LIST

<b>Risk No.</b>	<b>Risk Statement</b>	<b>Likelihood (of Consequences)</b>	<b>Consequences</b>	<b>Risk Rating</b>	<b>Priority</b>
1.2	There is a risk that a severe storm will cause substantial property damage requiring external resources to be employed for periods of 12 hours or more	Likely	Major 4	5 (HIGH)	1
2.2	There is a risk that a rural fire will destroy or cause substantial property damage to 5 structures or more	Almost certain	Moderate 3	6 (HIGH)	2
2.1	There is a risk that a rural fire will cause serious injury or loss of a life	Possible	Major 4	8 (HIGH)	3
6.1	There is a risk that a major road transport accident will cause large scale loss of life or serious injuries	Possible	Major 4	8 (HIGH)	4
5.1	There is a risk that a large urban/structural fire will cause loss of life or serious injury	Possible	Major 4	8 (HIGH)	5
1.1	There is a risk that a severe storm will cause serious injury or loss of life	Possible	Major 4	8 (HIGH)	6
3.1	There is a risk that terrorist activity will cause serious injury or death	Rare	Catastrophic 5	11 (HIGH)	7
4.1	There is a risk that a flood will cause loss of life or serious injury	Unlikely	Major 4	12 (HIGH)	8
4.2	There is a risk that flood will cause substantial property damage to 5 structures or more	Possible	Moderate 3	13 (MODERATE)	9
1.3	There is a risk that severe storms will cause closure of community lifelines or services for periods of 12 hours or more	Possible	Moderate 3	13 (MODERATE)	10

## SHIRE OF BUSSELTON EMERGENCY MANAGEMENT ARRANGEMENTS

4.4	There is a risk that a flood will cause substantial damage to community infrastructure or seriously disrupt utility services that will result in shutdown for periods of 24 hours or longer	Possible	Moderate 3	13 (MODERATE)	11
4.6	There is a risk that flood will cause a public health risk	Possible	Moderate 3	13 (MODERATE)	12
4.3	There is a risk that flood will cause relocation of residents and public from areas at risk for periods of 12 hours or greater	Possible	Moderate 3	13 (MODERATE)	13
2.4	There is a risk that rural fire will cause damage to community infrastructure or seriously disrupt utility services for periods of 24 hours or longer	Likely	Minor 2	14 (MODERATE)	14
2.7	There is a risk that a rural fire will impact on traffic flows and create a need for traffic management	Almost certain	Insignificant 1	15 (MODERATE)	15
3.2	There is a risk that a terrorist activity will cause closure or seriously disrupt community lifelines or services (20% +) for periods of 12 hours or more	Rare	Major 4	16 (MODERATE)	16
5.2	There is a risk that a large urban fire will destroy or cause substantial damage to 5 or more buildings	Unlikely	Moderate 3	17 (MODERATE)	17
1.4	There is a risk that a severe storm will cause the need for evacuation for a period of 12 hours or more	Unlikely	Moderate 3	17 (MODERATE)	18
4.7	There is risk that flood will disrupt the deployment of emergency services	Possible	Minor 2	18 (MODERATE)	19
5.3	There is a risk that a large urban fire will impact on traffic flows and create a need for traffic management	Likely	Insignificant 1	19 (MODERATE)	20
2.3	There is a risk that a rural fire will cause the evacuation of 300 plus people for a period of 12 hours or more	Unlikely	Minor 2	21 (MODERATE)	21
4.5	There is a risk that flood will impinge on the economic welfare of the affected community	Unlikely	Minor 2	21 (MODERATE)	22
1.5	There is a risk that a severe storm surge will cause localised flooding for a period of 24 hours or more	Unlikely	Minor 2	21 (MODERATE)	23

## SHIRE OF BUSSELTON EMERGENCY MANAGEMENT ARRANGEMENTS

2.5	There is a risk that a rural fire will cause medium/long term damage on the environment	Unlikely	Minor 2	21 (MODERATE)	24
2.6	There is a risk that a rural fire will impact on the economical and social well-being of the affected community	Unlikely	Minor 2	21 (MODERATE)	25
4.8	There is risk that flood will cause medium/long term damage to flora/fauna and ecosystems	Unlikely	Minor 2	MODERATE (21)	26
6.3	There is a risk that a major road transport accident will cause an environmental impact and health issues	Unlikely	Minor 2	21 (MODERATE)	27
5.5	There is a risk that a large urban fire will cause substantial damage to community infrastructure utilities or seriously disrupt utility services for periods of 24 hours or longer	Unlikely	Minor 2	MODERATE (21)	28
6.2	There is a risk that a major road transport accident will cause disruption to road based services for 24 hours or more	Unlikely	Minor 2	21 (MODERATE)	29
5.4	There is a risk that a large urban fire will require evacuation of neighbouring premises	Possible	Insignificant 1	22 (LOW)	30
3.3	There is a risk that a terrorist activity will have a medium, long or permanent effect on the environment	Rare	Minor 2	23 (LOW)	31
3.4	There is a risk that a terrorist activity will cause long term or permanent effects on community assets and values	Rare	Minor 2	23 (LOW)	32

**LEVEL OF RISK: E - Extreme (1-4); H - High (6-12); M - Moderate (13-21); L - Low (22 -25).**

**PART 3**

**RESPONSE**

## BUSSELTON EMERGENCY MANAGEMENT ARRANGEMENTS

The ERM process forms the foundation of the Busselton Emergency Management Arrangements as it identifies risks in our community. The following table indicates the five (5) top hazards that have been identified.

**TABLE 4: Hazards, Responsible HMA's, Appropriate State and Local Plans**

Hazard	HMA	Local HMA	WESTPLAN	Local Plan
Severe Storm	FESA	Busselton SES	Storm (2004)	
Bushfire	Local Government	Shire of Busselton	Bushfire 2005	Strategic Bushfire Plan
Bushfire	Department of Conservation & Environment Estate (DEC)	DEC	Bushfire 2005	Incident Control Working Plan
Major Road Transport Emergency	WA Police	WA Police	Traffic Crash 2005	
Urban Fire	FESA (Gazetted Fire Districts)	Busselton F&RS Dunsborough F&RS	Urban Fire 2000	FESA SOP's
Terrorist Activity	WA Police	WA Police	National Counter-Terrorism Plan (Commonwealth)	-
Human Epidemic Plan	Department of Health	Busselton Regional Hospital	Human Epidemic 2001	Human Epidemic Plan 2004
Busselton Airport Emergency	WA Police	Busselton Police Station	Aircrash 2005	Busselton Aerodrome Manual August 2006
Busselton Jetty	FESA	Busselton F&RS	-	Busselton Jetty Fire Emergency Plan

These arrangements are based on the premise that the HMA responsible for the above threats will develop, test and review appropriate emergency management plans for hazards in at least those areas where they are legislated to do so.

HMA's and combat agencies may require local government resources and assistance in emergency events. The Shire of Busselton is committed to providing that assistance/support where possible.

# BUSSELTON EMERGENCY MANAGEMENT ARRANGEMENTS

## RESPONSIBILITIES OF KEY PARTICIPATING ORGANISATIONS

### 1. WA POLICE

- i) Provide the Local Emergency Coordinator;
- ii) Act as the Hazard Management Agency for:
  - Aircraft crashes;
  - Road Transport Accidents;
  - Sea Search and Rescue; and
  - Land Search and Rescue.
- iii) Provide an Incident Control Centre, or field facility, to manage its Hazard Management Agency responsibilities;
- iv) Ensure the provision, staffing and management of the Busselton Local Emergency Coordination Centre;
- v) Carry out survey and assessment of damage caused by hazard events for which it is the Hazard management Agency and provide survey and assessment teams to assist other Hazard Management Agencies; and
- vi) Manage the survey and assessment arrangements during major operations.

### 2. FESA Act as the Hazard Management Agency with:

#### **FIRE AND RESCUE SERVICE**

- i) Act as the Combat Agency for:
  - Fires in gazetted fire Districts;
  - Hazardous materials incidents; and
  - Industrial accidents involving fire/explosion;
- ii) To be responsible for the following types of rescue:
  - Fire endangered rescue;
  - Vehicle accident rescue; and
  - Hazardous materials accident rescue;
  - Building rescue
- iii) Provide a Control Centre, or field facility, to manage its Hazard management Agency responsibilities;
- iv) Carry out survey and assessment of damage caused by hazard events for which it is the Hazard Management Agency and provide survey and assessment teams to assist other Hazard Management Agencies;
- v) Provide a Liaison Officer to the Local Emergency Coordination Centre if
- vi) Provide support to the Local Emergency Coordinator as requested; and
- vii) Provide a Specialist Rescue Coordinator if required.

### 3. VOLUNTEER BUSH FIRE BRIGADES

- i) Act as the Combat Agency for fires occurring outside of the Gazetted Fire District;
- ii) To be responsible for bush fire endangered rescue.
- iii) Provide an Incident Control Centre, or field facility, to manage its Hazard Management Agency responsibilities;
- iv) Carryout survey and assessment of damage caused by hazard incident for which it is the Hazard Management Agency and provide survey and assessment teams to assist other Hazard Management Agencies;
- v) Provide a Liaison Officer to the Local Emergency Coordination Centre if required; and
- vi) Provide support to the Local Emergency Coordinator as requested.

## BUSSELTON EMERGENCY MANAGEMENT ARRANGEMENTS

### 4. FESA Act as the Hazard Management Agency with:

#### STATE EMERGENCY SERVICE

- i). Act as the Combat Agency for:
  - Cyclone
  - Earthquake
  - Flood
  - Storm/tempest
  - Tsunami
- ii) Act as Combat Agency for:
  - Cave rescue
  - Cliff rescue;
  - Land search.
- iii) Provide an Incident Control Centre, or field facility, to manage its Hazard Management Agency responsibilities;
- iv). Carry out survey and assessment of damage caused by hazard event for which it is the Hazard Management Agency; and
- v). Provide survey and assessment teams to assist other Hazard Management Agencies;
- vi). Act as the Support Agency for:
  - Air search;
  - Communications;
  - Emergency Coordination Centre;
  - Fire fighting support;
  - Marine search and rescue;
  - Temporary building repair;
  - Resource coordination support;
  - Emergency re-supply
  - Miscellaneous support.
- vii) Provide support to the Local Emergency Coordinator as requested; and
- viii) Provide a Specialist Rescue Coordinator if required.

### 5. DEPARTMENT OF ENVIRONMENT AND CONSERVATION

- i) Act as the Hazard Management Agency for fires on DEC land;
- ii) Provide an Incident Control Centre, or field facility, to manage its Hazard Management Agency responsibilities;
- iii) Carry out survey and assessment of damage caused by the hazard even for which it is the Hazard Management Agency and provide survey and assessment teams to assist other Hazard Management Agencies;
- iv) Provide a Liaison Officer to the Local Emergency Coordination Centre if required; and
- v) Provide support to the Local Emergency Coordinator as requested.

### 7. SHIRE OF BUSSELTON

- i) Act as the Hazard Management Agency for fires occurring outside of the Gazetted Fire District and DEC Estate areas;
- ii) Provide Incident Control Centre, or field facility to manage its Hazard Management Agency responsibilities;
- iii) Provide a Liaison Officer at the Emergency Coordination Centre;
- iv) Carry out survey and assessment of damage caused by hazard events for which it is the Hazard Management Agency and provide survey and assessment teams to assist other Hazard Management Agencies

## **BUSSELTON EMERGENCY MANAGEMENT ARRANGEMENTS**

- v) Provide vehicles and plant to the Hazard Management Agency as requested;
- vi) Provide resources to assist with clearing of roads, road verges and drains (in conjunction with Water Corporation);
- vii) Arrange for the provision of appropriate resources to undertake an engineering assessment of damage to structures to determine fitness for habitation;
- viii) Provide a Health Coordinator and appropriate resources to deal with health risks caused by the emergency;
- ix) Provide appropriate evacuation centres to accommodate members of the community temporarily displaced by an emergency; and
- x) Provide a Recovery Coordinator and manage recovery operations following an emergency affecting the community within the Shire.

### **6. DEPARTMENT OF PLANNING & INFRASTRUCTURE**

- i) Act as the Hazard Management Agency for marine pollution in territorial waters and beaches;
- ii) Provide a Control Centre, or field facility, to manage its Hazard Management Agency responsibilities;
- iii) Carry out survey and assessment of damage caused by hazards for which it is the Hazard Management Agency and provide survey and assessment teams to assist other Hazard Management Agencies;
- iv) Provide a Liaison Officer to the Local Emergency Coordination Centre required; and
- v) Provide support to the Local Emergency Coordinator as requested.

### **7. WATER CORPORATION**

- i) Provide a Liaison Officer to the Local Emergency Coordination Centre if required;
- ii) Provide resources support to the Local Emergency Coordinator as requested; and
- iii) Provide flood intelligence to the FESA- SES as the Hazard Management Agency for flood.

### **8. BUSSELTON DISTRICT HOSPITAL**

- i) Provide a Medical Liaison Officer at the Local Emergency Coordination Centre if required;
- ii) Provide triage and medical teams at the incident site as required;
- iii) Provide treatment and care for casualties;
- iv) Provide medical supplies as required; and
- v) Provide first aid services at welfare centres if required.

### **9. ST JOHN AMBULANCE**

- i) Provide ambulance, first aid and triage services;
- ii) Provide a Liaison Officer to the emergency local Coordination Centre if required; and
- iii) Provide support to the Local Emergency Coordinator as requested.

### **10. DEPARTMENT FOR CHILD PROTECTION**

- i) Provide a Local Welfare Coordinator to manage the Local Welfare Support Plan;
- ii) Establish welfare centres;
- iii) Coordinate accommodation resources;
- iv) Coordinate emergency feeding at welfare centres;
- v) Coordinate provision of emergency clothing;
- vi) Coordinate registration and inquiry at welfare centres;

## **BUSSELTON EMERGENCY MANAGEMENT ARRANGEMENTS**

- vii) Provide personal services (counselling, financial, first aid at welfare centres, etc);  
and
- viii) Provide a Local Welfare Liaison Officer at the Local Emergency Coordination Centre if required.

### **11. WESTERN POWER**

- i) Make available Western Power resources to support an emergency operation;
- ii) Provide a Western Power Liaison Officer at the Local Emergency Coordination Centre if required; and
- iii) Restore electrical services affected by the emergency.

### **12. TELSTRA**

- i). Provide a Communications Coordinator to manage Communications
- ii) Make available TELSTRA resources to support an emergency
- iii) Provide a TELSTRA Liaison Officer at the Local Emergency Coordination Centre if required; and
- iv) Restore communication services affected by the emergency.

### **13. MINISTRY OF EDUCATION**

- i) Make available school buildings and facilities to the Welfare Coordinator as required;
- ii) Provide support staff to the Welfare coordinator as required.

### **14. DEPARTMENT OF AGRICULTURE & FOOD**

- i) Act as a Hazard Management Agency for Exotic Animal Disease outbreak within the Shire of Busselton;
- ii) Provide a control centre, or field facility to manage its HMA responsibilities.
- iii) Carry out survey and assessment of damage caused by hazards for which it the HMA
- iv) Provide a Liaison Officer to LEMC Coordination Centre if required; and
- v) Provide resources to support the LEMC Coordinator as requested.

### **15. BUSSELTON WATER**

- i) Provide a Liaison Officer to the Local Emergency Coordination Centre if required;
- ii) Provide resources support to the Local Emergency Coordinator as requested; and
- iii) Restore water supply services affected by the emergency

### **16; DEPARTMENT OF HEALTH**

- i) Act as HMA for human epidemic

# BUSSELTON EMERGENCY MANAGEMENT ARRANGEMENTS

## PART 3

### HAZARD PLAN NO.1

### SEVERE STORM/TEMPEST

#### SEVERE STORMS

##### 1. INTRODUCTION

The Shire of Busselton is subject to the effects of severe storms and flooding as a result of:

- a) Winter Gales;
- b) Tornados;
- c) Storm surges.

##### 2. HAZARD EFFECTS

The Shire of Busselton is subject to storm damage on a seasonal basis. Severe storms can produce some or all of the following effects:

- a) Light to severe damage to buildings, fences and vehicles
- b) Light to severe damage to trees;
- c) Loss of electrical power;
- d) Fire (lightning strikes);
- e) Death or injury (lightning strikes, hail, falling trees or wind-borne debris);
- f) Flash flooding (storm water drain overload);
- g) Road damage or collapse; and
- h) Traffic accidents (road weather alerts).

##### 3. RESPONSE ARRANGEMENTS

There will be three levels of response to storms:

- a) For strong wind warnings (25-33 knots) (40-50km/hr)
- b) For gale warnings (34-47 knots) (50-75km/hr)
- c) For severe weather warnings (48 knots and above) (75km/hr and above).

###### 3.1 Strong Winds

Strong winds produce responses which are usually infrequent and of a minor nature. Reports may be received directly to the Shire from the public, FESA Communications or Police Headquarters (COMCO). An appropriate response is activated upon request.

###### 3.2 Gale Warnings

The standard response to **Gale Warnings** includes SES unit being placed on Alert Status

# BUSSELTON EMERGENCY MANAGEMENT ARRANGEMENTS

## 3.3 Severe Weather Warnings

In the event of a **Severe Weather Warning** the Busselton Unit, **will adopt alert status and may adopt** restricted manning procedures. In addition to the local arrangements detailed for gale warnings, the Hazard Management Agency should ensure that the Police & Executive Officer of LEMC are requested to place their organisations on alert status. Public information broadcasts should be considered after consultation with SES

Alert Status requirements:

- a) Test emergency generators, where established, to key facilities
- b) Place Shire of Busselton Depot staff on stand-by
- c) Restrict control burning (Shire of Busselton responsibility)
- d) Check availability of storm damage stores & equipment
- e) Establish communications between the ECC and Busselton SES Unit

Should a severe storm affect the Shire of Busselton to the degree that services are badly disrupted and severe damage is sustained, the Incident Controller, in consultation with the Emergency Coordinator will determine the priority allocation of resources until the event is managed.

## 4. COMMAND & CONTROL STRUCTURE

The following structure will apply:

a)	<b>Emergency Coordinator</b>	Senior Police Officer
b)	<b>Hazard Management Agency</b>	FESA
c)	<b>Combat Agency</b>	SES
d)	<b>Fire Fighting</b>	Fire and Rescue Service
e)	<b>Casualties</b>	St John Ambulance/Busselton District Hospital
f)	<b>Traffic Control</b>	Police
g)	<b>Tree Damage</b>	SES/Shire of Busselton
h)	<b>Logistic Support</b>	SES/Shire of Busselton
i)	<b>Welfare</b>	Dept for Child Protection
j)	<b>Utilities Restoration</b>	Telstra, Western Power, Water Corporation, Busselton Water

# **BUSSELTON EMERGENCY MANAGEMENT ARRANGEMENTS**

## **5. LOCAL PLAN PROCEDURES**

Domestic calls for assistance are usually passed to SES from the following sources:

- a) Direct from the caller by telephone
- b) Via Police Operations Centre
- c) Direct observation by damage control teams
- d) Via the Shire of Busselton switchboard or other emergency services

Utility damage reports are provided to the SES Headquarters by the appropriate government department or agency. It is the responsibility of the control authority to provide timely Situation Reports (SITREPS) outlining the damage sustained to the Shire and action in progress to the Emergency Coordination Centre and to all members of the LEMC.

## **6. SUPPORT PLANS**

Support Plans for Evacuation, Environmental Health, Local Welfare, and Shire Depot may require activation.

## **7. RESOURCE REQUIREMENTS**

All or some of the following resources may be required:

- a) Rescue Team
- b) Tarps/plastic sheets/sand bags
- c) Chainsaws
- d) Power and lighting portable generator
- e) Plant and Operators
- f) Refreshments
- g) Road Warning Signs
- h) Accommodation

# BUSSELTON EMERGENCY MANAGEMENT ARRANGEMENTS

## PART 3

### HAZARD PLAN NO.2

#### MAJOR STRUCTURAL/URBAN FIRE

##### 1. INTRODUCTION

Response to this occurrence is a routine procedure for the primary emergency services. This Hazard Plan details the arrangements for an incident beyond the normal day-to-day response. The development of shopping centres and industrial areas greatly increases the risk of a major structural/urban fire.

##### 2. HAZARD EFFECTS

This hazard can produce all or some of the following:

- a) Dead and injured
- b) Trapped persons
- c) Destruction/damage of buildings
- d) The need for evacuation

##### 3. RESPONSE ARRANGEMENTS

Response to this hazard is normally effected through the 000 activation system. In view of the urgency of response, activation of this Hazard Plan will be in two phases.

**Phase 1:** Deployment of Fire & Rescue Service, Police, and Ambulance elements to the scene.

**Phase 2:** Activation of the ECC and support organisations.

##### 4. COMMAND AND CONTROL STRUCTURE

The following structure will be established on site:

a)	<b>Emergency Coordinator</b>	Senior Police Officer
b)	<b>Hazard Management Agency</b>	FESA
c)	<b>Combat Agency</b>	FRS
d)	<b>Casualties</b>	St John Ambulance
e)	<b>Traffic Control</b>	Police
f)	<b>Evacuation</b>	FESA, Police
g)	<b>Welfare</b>	Department for Child Protection

# **BUSSELTON EMERGENCY MANAGEMENT ARRANGEMENTS**

## **5. SUPPORT PLANS**

Support Plans for Evacuation, Local Welfare, and Shire Depot may require activation.

## **6. LOCAL PLAN PROCEDURES**

In the event that the Fire and Rescue Service require additional resources, the Police will be requested to obtain and co-ordinate those resources.

## **7. RESOURCE REQUIREMENTS**

The following resources are normally required:

- a) Chainsaws
- b) Earthmoving Equipment
- c) Water Tankers
- d) Heavy Lifting Equipment
- e) Generators and Lighting
- f) Masonry Cutting Equipment

# BUSSELTON EMERGENCY MANAGEMENT ARRANGEMENTS

## PART 3

### HAZARD PLAN NO.3

#### MAJOR RURAL FIRE

##### 1. INTRODUCTION

Response to this occurrence is a routine procedure for the primary emergency services. This Hazard Plan details the arrangements for an incident beyond the normal day-to-day response.

##### 2. HAZARD EFFECTS

This hazard can produce all or some of the following:

- a) Dead and injured
- b) Trapped persons
- c) Destruction of /damage to buildings
- d) The need for evacuation

##### 3. RESPONSE ARRANGEMENTS

Response to this hazard is normally effected through the 000 activation system. In view of the urgency of response, activation of this Hazard Plan will be in two phases.

**Phase 1:** Deployment of, Volunteer Bush Fire Brigade Units and, if necessary, Police and Ambulance elements to the scene.

**Phase 2:** Activation of the ECC and support organisations.

##### 4. COMMAND AND CONTROL STRUCTURE

The following structure will be established:

a)	<b>Emergency Coordinator</b>	Senior Police Officer
b)	<b>Hazard Management Agency</b>	Shire of Busselton
c)	<b>Combat Agency</b>	VBFBS
d)	<b>Casualties</b>	St John Ambulance, Busselton District Hospital
e)	<b>Traffic Control</b>	Police
f)	<b>Evacuation</b>	Police/ VBFBS
g)	<b>Welfare</b>	Department for Child Protection

## **BUSSELTON EMERGENCY MANAGEMENT ARRANGEMENTS**

### **5. SUPPORT PLANS**

Support Plans for Evacuation, Local Welfare and Shire Depot may require activation.

### **6. LOCAL PLAN PROCEDURES**

In the event that the Shire of Busselton/Volunteer Bush Fire Brigade Units require additional resources, the Police will be requested to obtain and co-ordinate those resources.

### **7. RESOURCE REQUIREMENTS**

The following resources are normally required:

- a) Fire Fighting Units
- b) Earthmoving Equipment
- c) Water Tankers
- d) Generators and Lighting
- e) Chainsaws

# BUSSELTON EMERGENCY MANAGEMENT ARRANGEMENTS

## PART 3

### HAZARD PLAN NO.4

#### MAJOR ROAD TRANSPORT EMERGENCY

##### 1. INTRODUCTION

Transport accidents are the most common form of emergency response. The Shire of Busselton is traversed by Bussell Highway in a south westerly direction, Caves Road in a Westerly and North-South Direction and several major regional roads including Vasse Highway, Caves Road, Sues Road, Cape Naturaliste Road and Eagle Bay Road.

##### 2. ROAD ACCIDENTS

Road accidents are normally handled under the standing operating procedures of the Police, Fire and Rescue Service and St John Ambulance. Where an extensive road accident occurs, beyond this normal response, the Police may activate portions of this Hazard Plan in support.

##### 3. RESPONSE ARRANGEMENTS

Response to this hazard is normally effected through the 000 activation system. In view of the urgency of response, activation of this Hazard Plan will be in two phases.

**Phase 1:** Deployment of Police, Fire & Rescue Service and Ambulance elements to the scene.

**Phase 2:** Activation of the ECC and support organisations.

##### 4. COMMAND AND CONTROL STRUCTURE

The following structure will be established on site:

a)	<b>Emergency Coordinator</b>	Senior Police Officer
b)	<b>Hazard Management Agency</b>	WA Police
c)	<b>Fire &amp; Rescue Combat</b>	F&RS
d)	<b>Casualties</b>	St John Ambulance, Busselton District Hospital
e)	<b>Traffic Control/Investigations</b>	WA Police
f)	<b>Evacuation</b>	Police/SES
g)	<b>Welfare</b>	Department for Child Protection

##### 5. SUPPORT PLANS

Support Plans for Evacuation, Local Welfare and Shire Depot may require activation.

## **BUSSELTON EMERGENCY MANAGEMENT ARRANGEMENTS**

### **6. LOCAL PLAN PROCEDURES**

Immediately following the activation of this plan upon request of Police, the following procedures will apply:

- a) Staffing of Local Emergency Co-ordination Centre
- b) Establishment of communication links with District Emergency Co-ordination Centre and service groups;
- c) Activate Local Community Welfare Support Plan & Deport Support Plan;

During initial stages there will be a vast amount of operational information flowing into all emergency services. It is essential that this information be collated at the Local Emergency Co-ordination Centre to enable effective co-ordination of resources.

### **7. RESOURCE REQUIREMENTS**

The entire resource inventory of the Shire of Busselton may be required.

# **BUSSELTON EMERGENCY MANAGEMENT ARRANGEMENTS**

## **PART 3**

### **HAZARD PLAN NO.5**

#### **AIR TRANSPORT EMERGENCY**

The impact of an air disaster on an urban community is an increasing hazard to the population. Such operations are extremely complex and could involve local, state, federal and international representation. The major response to air emergencies rests with Regional, State Level and RAAF Emergency Coordination for the purpose of obtaining information or resources.

The Directorate of Community Infrastructure within the Shire of Busselton has produced the Busselton Regional Airport - Aerodrome Manual August 2006 that outlines roles and reasonability in the event of an Emergency.

# BUSSELTON EMERGENCY MANAGEMENT ARRANGEMENTS

## PART 3

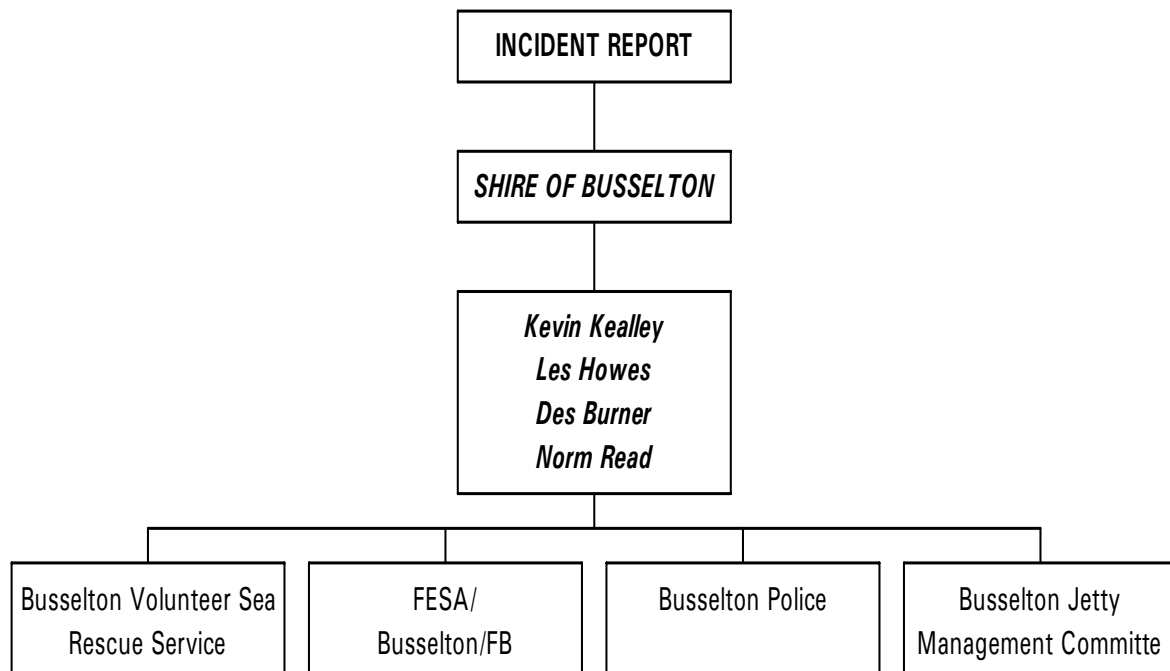
### HAZARD PLAN NO.6

#### BUSSELTON JETTY FIRE EMERGENCY PLAN

The Busselton Jetty is a significant tourist attraction and a recreational facility with high environmental value. It is approximately 2km long and is a structure mostly of timber pile and bracing, steel truss and concrete deck structure with kerbs and a steel rail line traversing most of it. The Jetty is owned by the State Government, administered through the Department of Transport under the Minister for Transport. It is operated under a licence by the Shire of Busselton. The Shire of Busselton has appointed operations functions of the Jetty to the Busselton Jetty Management Committee, but retains the responsibility for the structure.

The principal risk to the Jetty is fire for those remaining (approximately 550m) timber sections. The Busselton Jetty Fire Emergency Plan outlines the responsibilities and personnel involved in:

- Managing the response;
- Combating the emergency;
- How the emergency is dealt with;
- Recovery;
- Reporting



## BUSSELTON EMERGENCY MANAGEMENT ARRANGEMENTS

### MAJOR CONTACTS - SHIRE OF BUSSELTON

Director Community Infrastructure	Ph: 9781 0416 Mob: 0400 567 447
Manager, Infrastructure Planning	Ph: 9781 0389 Mob: 0419 046 601
Asset Manager Community Infrastructure	Ph: 97810413 Mob: 0408 092 138
Coordinator Ranger & Fire Services	Ph: 9781 0467 Mob: 0418 933 332
Jetty Maintenance Officer Infrastructure Planning - CI	Mob: 0418 930 201
Maintenance Team Coordinator Infrastructure Services - CI	Ph: 9781 0489 Mob: 0407 993 925
Construction Team Coordinator Infrastructure Services - CI	Ph: 9781 0351 Mob: 0407 521 063

**BUSSELTON EMERGENCY MANAGEMENT ARRANGEMENTS**

**PART 3**

**HAZARD PLAN No. 7**

**EXOTIC ANIMAL DISEASES & ANIMAL WELFARE**

(To be developed)

**BUSSELTON EMERGENCY MANAGEMENT ARRANGEMENTS**

**PART 3**

**EVACUATION PLAN**

(To be developed)

**BUSSELTON EMERGENCY MANAGEMENT ARRANGEMENTS**

**PART 4**

**RECOVERY PLAN**

**(To be developed)**

**BUSSELTON EMERGENCY MANAGEMENT ARRANGEMENTS****PART 5  
EMERGENCY CONTACTS DIRECTORY**

<b>HAZARD</b>	<b>HMA</b>	<b>CONTACT</b>
AIR TRANSPORT EMERGENCIES	WA POLICE	Busselton Police - 9754 9555 Dunsborough Police - 9781 3030
CLIFF COLLAPSE/LAND SLIDE	FESA - FIRE & RESCUE SERVICE	9323 9404 (Admin) 1300 1300 39
EARTHQUAKE	FESA - STATE EMERGENCY SERVICE	0427 800 282
EXOTIC ANIMAL DISEASE	DEPARTMENT OF AGRICULTURE & FOOD	1800 675 888 (24 HOURS)
FIRE (DEC Managed Land)	DEPARTMENT OF ENVIRONMENT & CONSERVATION	9752 5555
FIRE (RURAL)	SHIRE OF BUSSELTON - VBFB	9781 0444
FIRE (URBAN)	FESA - FIRE & RESCUE SERVICE (F&RS)	000
FLOOD	FESA - STATE EMERGENCY SERVICE (SES)	0427 800 282 9752 2598 1300 1300 39
HAZARDOUS MATERIALS EMERGENCIES	FESA - FIRE AND RESCUE SERVICE (F&RS)	1300 1300 39
HUMAN EPIDEMIC	HEALTH DEPARTMENT OF WA	9222 4222
LAND SEARCH & RESCUE	WA POLICE	Busselton Police - 9754 9555 Dunsborough Police - 9781 3030
MARINE OIL POLLUTION	DEPARTMENT OF PLANNING & INFRASTRUCTURE (DPI)	9216 8000
MARINE TRANSPORT EMERGENCIES	DEPARTMENT OF PLANNING & INFRASTRUCTURE (DPI)	9216 8000
ROAD TRANSPORT EMERGENCIES	WA POLICE	Busselton Police - 9754 9555 Dunsborough Police - 9781 3030
SEA SEARCH AND RESCUE	WA POLICE	Busselton Police - 9754 9555 Dunsborough Police - 9781 3030
SPACE DEBRIS RE-ENTRY	WA POLICE	Busselton Police - 9754 9555 Dunsborough Police - 9781 3030
STORM/TEMPEST	FESA - STATE EMERGENCY SERVICE (SES)	000 0427 800 282
STRUCTURAL COLLAPSE	FESA - FIRE & RESCUE SERVICE (F&RS)	000 0427 800 282

## BUSSELTON EMERGENCY MANAGEMENT ARRANGEMENTS

<b>EMERGENCY SERVICES CONTACTS</b>				
<b>AGENCY</b>	<b>NUMBER</b>	<b>2nd NUMBER</b>	<b>FAX</b>	<b>ADDRESS</b>
AMBULANCE	000	9752 3866	9751 3866	Mill Rd Busselton
FIRE - Urban	000	9752 2713	9752 1284	Albert St Busselton
FIRE - Bush	000	9781 0444	9752 4958	Shire of Busselton 2 Southern Drive Busselton
POLICE - BUSSELTON	000	9754 9555	9754 9595	12 Stanley St BUSSELTON
POLICE - DUNSBOROUGH	000	9781 3030	9781 3044	Naturaliste Tce Dunsborough
STATE EMERGENCY SERVICE - Busselton Unit	0427 800 282		9752 3899	Bussell Hwy West Busselton
BUSSELTON VOLUNTEER MARINE RESCUE GROUP	0407 755 715 (24 hours)	9754 777	9751 1599	
NATURALISTE VOLUNTEER SEA RESCUE GROUP	9781 3030 (*Dunsborough Police)	0438 553 594 9756 8262 (HQ)		Geographe Bay Rd Quindalup
BUSSELTON DISTRICT HOSPITAL	9754 0333		9754 0347	Mill Rd Busselton
<b>STATE GOVERNMENT, AGENCIES, AUTHORITIES EMERGENCY CONTACTS</b>				
<b>AUSTRALIAN CITIZENS RADIO MONITORS (ACRM)</b>				
<b>POSITION</b>	<b>PHONE</b>	<b>2nd NUMBER</b>	<b>FAX</b>	<b>ADDRESS</b>
ACRM	9727 2451		9727 2552	PO Box 141 CAPEL WA 6271
<b>ALINTA GAS</b>				
Emergency	13 13 52			

## BUSSELTON EMERGENCY MANAGEMENT ARRANGEMENTS

<b>BUSH FIRE BRIGADE - SHIRE OF BUSSELTON</b>				
POSITION	PHONE	2nd NUMBER	FAX	ADDRESS
SHIRE OF BUSSELTON 24 Hours	9781 0444		9752 4958	Southern Drive (Locked Bag 1) Busselton
Coordinator Fire & Ranger Services	9781 0467	0418 933 332		
Chief Bush Fire Control Officer	9755 5354	0417 176 656	9755 5903	
Deputy Chief Bush Fire Control Officer	9756 7904	0428 863 028		
Fire Management Officer	9781 0468	0427 202 717		
<b>BUSSELTON REGIONAL AIRPORT</b>				
POSITION	PHONE	2nd NUMBER	FAX	ADDRESS
Airport Operations Officer	9754 2333	0417 177 626	9754 2300	Vasse Highway Busselton
Airport Club Room	9751 1600			
<b>BUSSELTON VOLUNTEER MARINE RESCUE GROUP</b>				
POSITION	PHONE	2nd NUMBER	FAX	ADDRESS
On-call Duty Officer (24 Hours)	0407 755 715			
Commander	0407 523 675			
Deputy Commander	0418 886 060			
BASE	9754 7777		9751 1599	PO Box 1646 BUSSELTON
<b>BUSSELTON WATER</b>				
POSITION	PHONE	2nd NUMBER	FAX	ADDRESS
CEO	9781 0500	0488 522 333	9754 1075	PO BOX 57 BUSSELTON
Manager Production Supply	9781 0511	0448 522 233	9754 1075	
Senior Supervisor Production Supply	9752 2388	0407 522 388	9752 4747	
<b>DEPARTMENT OF AGRICULTURE &amp; FOOD</b>				
POSITION	PHONE	2nd NUMBER	FAX	ADDRESS
24 HOURS	1800 675 888			
(BIO-SECURITY OFFICERS)	9780 6203 9780 6280			
<b>DEPARTMENT OF ENVIRONMENT &amp; CONSERVATION (DEC)</b>				
POSITION	PHONE	2nd NUMBER	FAX	ADDRESS
District Manager	9752 5555	0427 525 555	9752 1432	14 Queen St

## BUSSELTON EMERGENCY MANAGEMENT ARRANGEMENTS

				BUSSELTON
Fire Operations Officer	0427 773 527			
24 Hours	1300 784 782			
<b>DEPARTMENT FOR CHILD PROTECTION</b>				
POSITION	PHONE	2nd NUMBER	FAX	ADDRESS
District Emergency Services Officer	9734 1699	0427 476 658	9752 1519	PO Box 222 Collie 6225
Team Leader - Busselton	9752 3666	0418 953 054		PO Box 223 BUSSELTON
District Manager- Bunbury	9722 5000	0408 933 739	9721 2408	80 Spencer St Bunbury
Crisis Care 24 Hours	1800 199 008			
<b>DEPARTMENT OF PLANNING &amp; INFRASTRUCTURE</b>				
POSITION	PHONE	2nd NUMBER	FAX	ADDRESS
District Office	9792 6666		9792 6600	24 Wellington St BUNBURY
Marine Officers	9792 6610	0428 939 547	9792 6600	
<b>FIRE &amp; RESCUE SERVICE</b>				
POSITION	PHONE	2nd NUMBER	FAX	ADDRESS
Busselton Fire Station	9752 2713		9752 1284	Albert Street Busselton (PO Box 286)
Captain	0419 046 278			
Dunsborough Fire Station	9756 8622		9756 8622	Marri Drive Dunsborough (PO Box 695)
Captain	0417 568 370			
FESA - Regional Duty Manager (24 hours)	9725 4318			

## BUSSELTON EMERGENCY MANAGEMENT ARRANGEMENTS

<b>FESA - SOUTH WEST REGIONAL OFFICE</b>				
POSITION	PHONE	2nd NUMBER	FAX	ADDRESS
Regional Director	0429 800 043			PO Box 1288 Bunbury 6231
Fire Services - District Manager	0427 026 964			
Fire Services - Area Manager	0427 008 929			
SES - District Manager	0428 100946			
<b>HOSPITALS</b>				
POSITION	PHONE	2nd NUMBER	FAX	ADDRESS
Busselton District Hospital District Manager	9754 0333		9752 1115	Mill Road Busselton Locked Bag 3
Margaret River District Hospital District Manager	9757 0400		9757 0480	Farrelly St Margaret River
Bunbury Regional Hospital	9722 1000		9722 1017	Bussell Highway Bunbury
<b>LOCAL GOVERNMENT</b>				
POSITION	PHONE	2nd NUMBER	FAX	ADDRESS
Augusta-Margaret River	9752 5255	0419 902 540 (Manager, Ranger)	9757 2512	Town View Tce Busselton
Busselton	9754 0444		9752 4958	2 Southern Dr Busselton
Coordinator - Fire & Ranger Services	9754 0467	0418 933 332		
Bunbury	9792 7000	0400 680 821 (Rangers)	9792 7184	4 Stephen St Bunbury
Capel	9727 0222	CEO: 0418 903 263 0417 953 959 (Duty Ranger)	9727 0223	Forrest Rd Capel
Donnybrook- Balingup	9780 4200	CEO: 0417 180 423 CEO a/h: 9731 1788	9731 1677	Bentley St Donnybrook
Nannup	9756 1018	CEO: 9756 0083	9756 1275	15 Adam St Nannup
<b>MAIN ROADS WA</b>				
POSITION	PHONE	2nd NUMBER	FAX	ADDRESS
Emergency	1800 800 009	9724 9724	9724 9725	Lot 66 Robertson Rd

## BUSSELTON EMERGENCY MANAGEMENT ARRANGEMENTS

				Bunbury
<b>POLICE</b>				
POSITION	PHONE	2nd NUMBER	FAX	ADDRESS
BUNBURY	9722 2111		9722 2000	Wittenoom St Bunbury
BUSSELTON	9754 9555	9722 2111	9754 9595	20 Stanley St Busselton
DUNSBOROUGH	9781 3030	9722 2111	9781 3044	Naturaliste Tce Dunsborough
MARGARET RIVER	9757 2222	0427 601 070	9757 3430	Willmott Ave Margaret River
NANNUP	9756 1000			Warren Rd Nannup
<b>ROAD CARE</b>				
24 Hours	1800 800 009			
<b>WATER CORPORATION</b>				
POSITION	PHONE	2nd NUMBER	FAX	ADDRESS
Manager	9791 0450			61 Victoria St Bunbury
Drainage Team Leader	0417 928 714 (John Moon)			
<b>WESTERN POWER</b>				
Emergency	13 13 51			

<b>MEDIA CONTACTS</b>				
<b>RADIO</b>	<b>PHONE</b>		<b>FAX</b>	
ABC - Regional	9792 2711		9792 2799	
Radio West	9726 5555		9791 4374	
<b>TELEVISION</b>				
GWN	9721 4466		9792 2932	
WIN	9721 9900			

# BUSSELTON EMERGENCY MANAGEMENT ARRANGEMENTS

## PART 6 TESTING, EXERCISING & REVIEWING THE ARRANGEMENTS

### 6.1 Testing and Exercising

It is envisaged that at least one exercise is conducted each financial year to test a part of the plan and a major exercise be conducted to test the complete plan and involve all agencies in the Shire of Busselton's operation area.

The Shire's Emergency Management Arrangements are intended to be a blueprint for our community's response to and recovery from a major occurrence and need to be verified through continual testing for accuracy and functionality.

The benefits of testing include:

- Determining the effectiveness of the arrangements;
- Bringing together all relevant people and giving them knowledge of and confidence in each other;
- Providing the opportunity to promote the arrangements and educate the community;
- Providing an opportunity for testing participating agencies operational procedures and skills in simulated emergency conditions while testing the ability of the agencies to work together on common tasks; and
- Improving the arrangements in accordance with results found from debriefing the testing.

Testing of our arrangements will require selecting an appropriate style of exercise. The aim and outcomes of the exercises will help us determine the effectiveness of the co-ordination of HMA's and Support Agencies activities.

The types of exercises include: discussion exercises (orientation exercises, desktop and syndicate progressive exercises; and functional exercises that take place in an operational environment and require participants to actually perform the functions of their roles (tabletop exercises). Additionally consideration is to be given to the carrying out of field exercises by arrangement with LEMC.

### 6.2 Reviewing

As stipulated in State Emergency Management Policy No. 2.5 Emergency Management in Local Government Districts the local emergency management arrangements are to be reviewed as follows:

- Contact lists are reviewed and updated quarterly;
- After an event or incident in which the local emergency management arrangements were used;
- After exercises that test the arrangements; and
- An entire review is to be conducted every five years (as risks might vary due to climatic, environment and population changes).

# **BUSSELTON EMERGENCY MANAGEMENT ARRANGEMENTS**

## **6.3 Responsibility**

The Executive Officer of LEMC shall be responsible for these updates to be carried out and distributed.

**BUSSELTON EMERGENCY MANAGEMENT ARRANGEMENTS**

**PART 7**

**SUPPORT PLAN**

(To be developed)

# **BUSSELTON EMERGENCY MANAGEMENT ARRANGEMENTS**

## **APPENDICES**

# BUSSELTON EMERGENCY MANAGEMENT ARRANGEMENTS

## APPENDIX 1

### RESOURCE SCHEDULE

#### SHIRE OF BUSSELTON PLANT AND EQUIPMENT

**LOCATION: Shire of Busselton Works Depots at  
Barlee Street, Busselton and Vidler Road, Dunsborough**

	Item Description	Number of Items
102	Medium Grader	2
103	Heavy Grader	2
127	Trac WH 60KW Parks	4
132	Chain Saws	32
134	Pumping Equipment	30
140	Load/Backhoe Construction	2
144	Loader-Tool Carrier	1
146	Loader medium Construction	1
149	Loader heavy Construction	1
160	Truck 2/4 Tonne	6
161	Truck 2/4T Parks	5
162	Truck 5/8 T Const	3
163	Trucks 5/8 T Parks	1
164	Truck 10T Construction	6
165	Prime Movers	1
171	Trailer S/A Box	8
172	Trailer S/A Special Purpose	10
173	Trailer T/A Box/Flat	11
174	Pig Trailer	3
196	Light Vehicle Utility 4WD	18

# BUSSELTON EMERGENCY MANAGEMENT ARRANGEMENTS

## APPENDIX 2

### COMMUNITY & RECREATION CENTRES

<b>NAME</b>	<b>LOCATION</b>	<b>CONTACT</b>	<b>PHONE</b>
Geographe Leisure Centre	Recreation Lane Busselton	Manager	9754 3600 mob: 0439 653 966
Naturaliste Community Centre	Dunsborough Lakes Drive	Manager	9755 3966

# BUSSELTON EMERGENCY MANAGEMENT ARRANGEMENTS

## APPENDIX 3

### MAJOR SCHOOLS WITHIN THE SHIRE OF BUSSELTON

#### GOVERNMENT SCHOOLS

School	Address	Contact
Busselton Senior High School	Cnr Bussell Highway & Queen Elizabeth Avenue Busselton	9754 9333
Busselton Primary	Avocet Boulevard Busselton	9754 2544
Geographe Primary	153 Clydebank Avenue, Busselton	9754 0100
Vasse District Community	Kaloorup Road Vasse	9755 4122
West Busselton Primary	Bower Road West Busselton	9752 4511
Dunsborough Primary	Turner Street Dunsborough	9755 3128

#### PRIVATE SCHOOLS

School	Address	Contact	Hall
Georgiana Molloy AS	Joseph Drive Busselton	9751 5144	Undercover area
St Josephs Primary	Kelly Drive Busselton	9752 1800	Undercover area
McKillop Catholic College	Kelly Drive Busselton	9754 2444	
Cornerstone Christian College	Grace Court Busselton	9754 1144	
Our Lady of the Cape	Cape Naturaliste Road Dunsborough	9755 3866	
Yallingup Steiner School	Cnr Caves & Wildwood Roads Yallingup	9755 2230	

# BUSSELTON EMERGENCY MANAGEMENT ARRANGEMENTS

## APPENDIX 4

### RELIGIOUS BUILDINGS WITHIN THE SHIRE OF BUSSELTON

Anglican	43 Peel Terrace Busselton	9752 1101
Assembly of God	147-149 Kent Street Busselton	9752 3392 (H)
Baptist Church	Community Centre Recreation Lane Busselton	
Catholic	Cnr Stanley & Kent Streets BUSSELTON Our Lady of the Bay Kelly Drive BUSSELTON	9752 1687
Church of Christ	Grace Court Busselton	9754 1420
Salvation Army	94 Kent Street Busselton	9754 2733
Seventh Day Adventist	10 Pettit Crescent Busselton	9754 3484
Uniting Church	47 Kent Street Busselton	0412 425 058
Uniting Church	Naturaliste Road Dunsborough	97522794 mob 0418 926 995

# BUSSELTON EMERGENCY MANAGEMENT ARRANGEMENTS

## APPENDIX 5

### LOCAL EMERGENCY MANAGEMENT COMMITTEE MEMBERS

Persons holding the described position within the nominated organisations make up the Shire of Busselton Local Emergency Management Committee.

Organisation Name & Address	Position	24 Hour Emergency Contact	LEMC Current Representative
<b>Shire of Busselton</b> 2 Southern Drive Locked Bag 1 Busselton 6280 Phone: 9781 0444 Fax: 9852 4958 Email: <a href="mailto:shire@busselton.wa.gov.au">shire@busselton.wa.gov.au</a> Web: <a href="http://www.busselton.wa.gov.au">www.busselton.wa.gov.au</a>	Coordinator Fire & Ranger Services	9781 0444	Tim Wall Shire of Busselton Coordinator - Fire & Rangers Services Mobile: 0418 933 332 Email: <a href="mailto:timw@busselton.wa.gov.au">timw@busselton.wa.gov.au</a>  Bev Clarke Shire President Shire of Busselton Shire President  Alison Edmunds Shire of Busselton Manager, Environmental Services  Russell Finlay Shire of Busselton Organisational Risk Facilitator
<b>Bush Fire Service</b> <b>C/o Shire of Busselton</b> 2 Southern Drive Locked Bag 1 <b>Busselton</b> <b>Phone: 9781 0468</b> <b>Fax: 9852 4958</b> Email: <a href="mailto:shire@busselton.wa.gov.au">shire@busselton.wa.gov.au</a>	FESA/ Shire of Busselton Fire Management Officer	0427 202 717	Andrew Thompson FESA/ Shire of Busselton Fire Management Officer 2 Southern Drive (Locked Bag 1) <b>Busselton 6280</b>
<b>Busselton District Hospital</b> <b>Mill Road</b> (Locked Bag 3) Busselton Phone: 9754 0333 Fax: 9754 0347	District Manager Busselton / Naturaliste Direct Care Services WACHS-SW	District Manager 9754 0333	Tricia Nolan District Manager Busselton / Naturaliste Direct Care Services Phone: 9754 0358 Mobile: 0407 755 715 Email: <a href="mailto:tricia.nolan@health.wa.gov.au">tricia.nolan@health.wa.gov.au</a>
<b>Busselton Volunteer Marine</b> <b>Rescue Group</b> Geographe Bay Road (PO Box 1646) Busselton WA 6280 Phone: 9754 7777 Fax: 9754 1599 Web: <a href="http://busselton-rescue.mysouthwest.com.au/">http://busselton-rescue.mysouthwest.com.au/</a>	On-call Duty Officer		Phil Nicholls Commander Mobile: 0418 886 060 Email: <a href="mailto:phil.nicholls@dpi.wa.gov.au">phil.nicholls@dpi.wa.gov.au</a>



## BUSSELTON EMERGENCY MANAGEMENT ARRANGEMENTS

<p><b>State Emergency Service</b>  <b>160 Bussell Highway</b>          (PO Box 1386,)          Busselton          Phone: 9752 2598          Fax: 9752 2899</p>	<p>Local Manager</p>	<p>0427 800 282</p>	<p>Local Manager: Toni Frings          Ph: 9752 2598          Mobile: 0409 522 027          Email: <a href="mailto:info@milesaway.com.au">info@milesaway.com.au</a></p> <p>Deputy Local Manager: Ken Pember          Mobil:: 0428 346 012          Email:  <a href="mailto:superpay@tadaust.org.au">mailto:superpay@tadaust.org.au</a></p>
<p><b>St John Ambulance Busselton</b>  <b>Sub-branch</b>  <b>Mill Road</b>  <b>Busselton</b>          Email:  <a href="mailto:bussparamedics@westnet.com.au">bussparamedics@westnet.com.au</a></p>		<p>For all emergencies: 000</p>	<p>Wayne Cranstoun  <a href="mailto:bussparamedics@westnet.com.a">bussparamedics@westnet.com.a</a></p>
<p><b>Water Corporation</b>  <b>61 Victoria Street</b>  <b>Bunbury</b>  <b>Phone: 9791 0450</b></p>	<p><b>Team Leader</b>          Drainage Management</p>		<p>John Moon: Team leader,          Drainage Management          Ph 9752 1308          Mobile 0417 928 714          Email:  <a href="mailto:john.moon@watercorporation.com.au">john.moon@watercorporation.com.au</a></p>
<p><b>WA Police</b>          Busselton Police Station          12 Stanley Street          Busselton          Phone: 9754 9555          Fax: 9754 9595</p>		<p>For all emergencies: 000</p> <p>For LEMC matters 9754 9555</p>	<p>Sergeant Brendan Moore          Phone: 9754 9555          Fax: 9754 9595          Email:  <a href="mailto:brendan.moore@police.wa.gov.au">brendan.moore@police.wa.gov.au</a></p>
<p><b>WA Police</b>  <b>Dunsborough Police Station</b>  <b>Leslie Pearce Place,</b>  <b>Dunsborough, 6281 WA</b>  <b>Phone: 9781 3030</b>  <b>Fax: 9781 3044</b></p>		<p>For all emergencies: 000</p> <p>For LEMC matters 9754 9555</p>	<p>Officer In Charge          Sergeant Ian Clarke          Phone : 9781 3030          Mobile : 0428 358 134          Email: <a href="mailto:ian.clarke@police.wa.gov.au">ian.clarke@police.wa.gov.au</a></p>

# BUSSELTON EMERGENCY MANAGEMENT ARRANGEMENTS

## APPENDIX 6

### HAZARD MANAGEMENT AGENCIES

The undermentioned list of hazards/emergencies identifies the Hazard Management Agency responsible for that hazard/emergency. The hazards/emergencies identified are by no means exhaustive and will be added to as required. See Part Five of these Arrangements for contact telephone numbers.

SER	HAZARD/EMERGENCY	HAZARD MANAGEMENT AGENCY	PHONE
1	AIR TRANSPORT EMERGENCIES	WA POLICE	9222 1111
3	EARTHQUAKE	WA STATE EMERGENCY SERVICE, FESA	0409 522 027
4	EXOTIC ANIMAL DISEASE	AGRICULTURE WESTERN AUSTRALIA	9780 6100 1800 675 888
5	FIRE (DEC managed land)	DEPARTMENT OF ENVIRONMENT & CONSERVATION	9752 5555
6	FIRE (RURAL)	BUSH FIRES BOARD FESA - SHIRE OF BUSSELTON	000 9781 0444
7	FIRE (URBAN)	FIRE & RESCUE SERVICE FESA	000
8	FLOOD	STATE EMERGENCY SERVICE FESA	9752 2598 1300 1300 39
9	FUEL SHORTAGE EMERGENCIES	DEPARTMENT OF TRANSPORT	9216 8000
10	HAZARDOUS MATERIALS EMERGENCIES	FIRE & RESCUE SERVICE FESA	9323 9404 (Admin) 1300 1300 39
11	HUMAN EPIDEMIC	HEALTH DEPARTMENT OF WA	9222 4222
12	LAND SEARCH & RESCUE	WA POLICE SERVICE	9754 9555
13	LAND SLIDE	FIRE AND RESCUE SERVICE FESA	9323 9404 (Admin) 1300 1300 39
14	MARINE OIL POLLUTION	DEPARTMENT OF TRANSPORT	9216 8000
15	MARINE TRANSPORT EMERGENCIES	DEPARTMENT OF TRANSPORT	9216 8000
16	NUCLEAR POWERED WAR SHIPS EMERGENCIES	WA POLICE	9222 1111
19	ROAD TRANSPORT EMERGENCIES	WA POLICE	BUSSELTON - 9754 9555 DUNSBOROUGH - 9781 3030
20	SEA SEARCH AND RESCUE	WA POLICE	9222 1111
21	SPACE DEBRIS RE-ENTRY	WA POLICE	9222 1111
22	STORM/TEMPEST	WA STATE EMERGENCY SERVICE FESA	9277 0555 (Admin) 1300 1300 39
25	STRUCTURAL COLLAPSE	FIRE & RESCUE SERVICE FESA	000

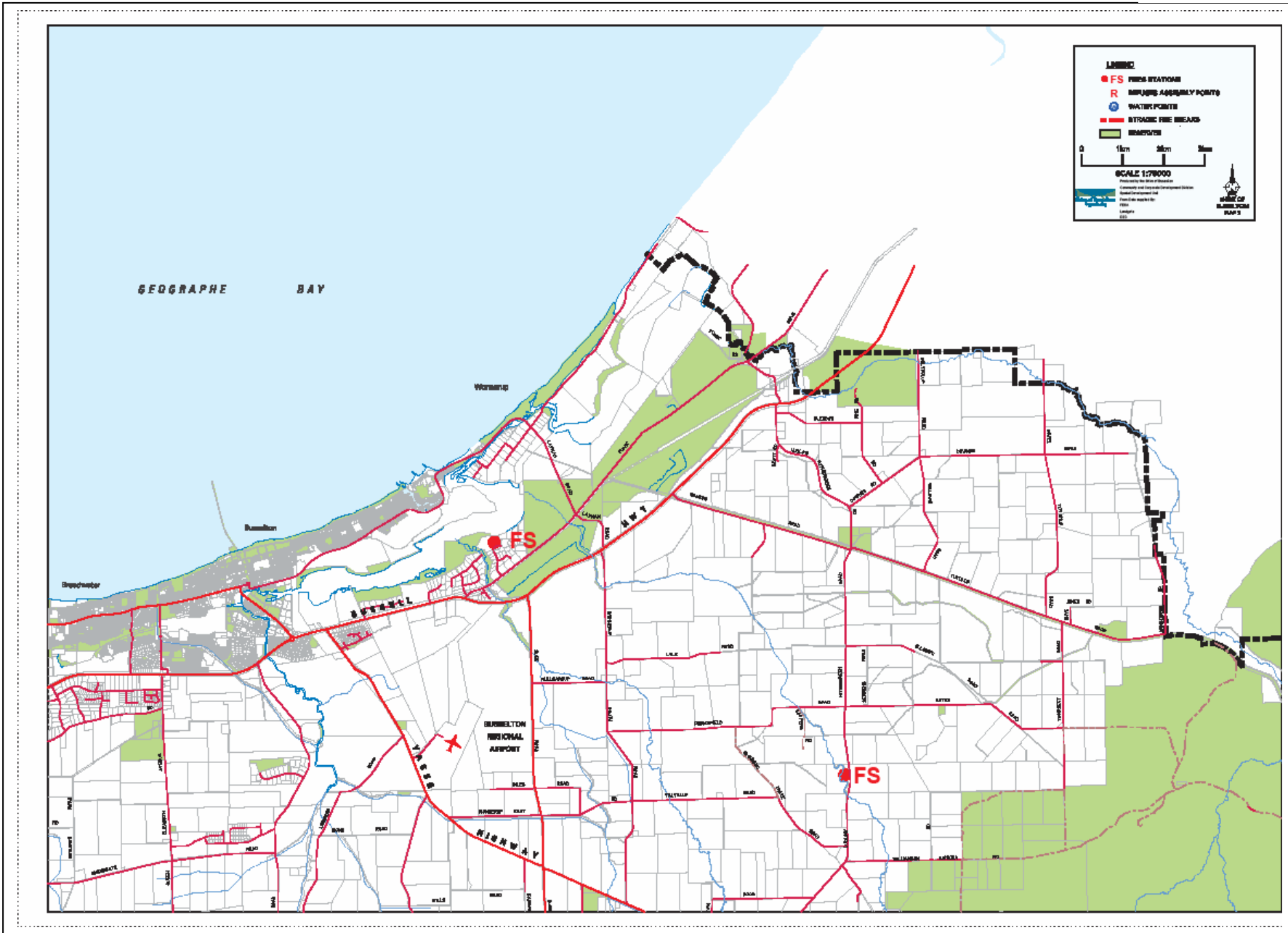
# BUSSELTON EMERGENCY MANAGEMENT ARRANGEMENTS

## APPENDIX 7

### SHIRE OF BUSSELTON SENIOR OFFICERS

#### CONTACT DETAILS POSITION WORK /MOBILE

Chief Executive Officer	Ph: 9781 0445 Mob: 0408 810 444
Director Community & Organisational Development	Ph: 9781 0401 Mob: 0419 925 607
Director Community Infrastructure	Ph: 9781 0416 Mob: 0400 567 447
Director Lifestyle Services	Ph: 9781 0473 Mob: 0407 441 897
Executive Manager Systems & Information	Ph: 9781 0377 Mob: 0438 288 755
Coordinator Ranger & Fire Services	Ph: 9781 0467 Mob: 0418 933 332
Manager Infrastructure Planning	Ph: 9781 0389 Mob: 0419 046 601
Steve Fisher Asset Manager	Ph: 9781 0413 Mob: 0408 092 138
Executive Officer Community Infrastructure	Ph: 9781 0423 Mob: 0408 927 911
Manager Environmental Health	Ph: 9781 0456 Mob: 0419 045 564
Manager Geographe Leisure Centre	Ph: 9754 3600 Mob: 0439 653 966
Manager Naturaliste Community Centre	Ph: 9755 3966
Facility Management Co-ordinator Community Infrastructure	Ph: 97810 390 Mob: 0417 188 793



# BUSSELTON EMERGENCY MANAGEMENT ARRANGEMENTS

