



# Agenda

Bush Fire Advisory Committee

Tuesday 11 June 2024

## Contents

1 Acknowledgement of Country .....	4
2 Attendance and Apologies .....	4
2.1 Present.....	4
2.2 In Attendance.....	4
2.3 Apologies .....	4
3 Disclosures of Interest .....	4
4 Confirmation and receipt of minutes.....	4
4.1 Bush Fire Advisory Committee meeting held 12 March 2024 .....	4
5 Presentations .....	4
5.1 Presentation .....	4
6 Officer/ Delegate Reports .....	5
6.1 DFES.....	5
6.2 COB/ DFES.....	8
6.3 Bushfire Mitigation update report.....	14
7 Next Meeting Date .....	35
8 Closure .....	35

Document Control		Version No.	1
Prepared By	Phoebe Buntain- Barrie	COA:	
ECM Reference	Doc ID		
Date Created			
Version Control			
Project Folder			

**NOTICE** is given that a meeting of the Bush Fire Advisory Committee will be held at the City of Busselton, Kaloorup Meeting Room, 2 Southern Drive, Busselton with the option of via Microsoft Teams video conference on 11 June 2024 commencing at 6:30pm.

Your attendance is respectfully requested.



**TONY NOTTLE**  
Chief Executive Officer, City of Busselton

## **1 Acknowledgement of Country**

The City of Busselton acknowledges the Wadandi and Bibbulmun people as the traditional custodians of this region and pay respects to Elders past and present.

The meeting will be declared open.

## **2 Attendance and Apologies**

### **2.1 Present**

### **2.2 In Attendance**

### **2.3 Apologies**

Apologies received from:

Peter Thomas (DFES)

Matt Muir (Fire Control Officer, Yallingup Rural)

## **3 Disclosures of Interest**

## **4 Confirmation and receipt of minutes**

That the minutes of the Bush Fire Advisory Committee meeting held 12 March 2024 be confirmed as a true and correct record.

## **5 Presentations**

### **5.1 Presentation**

Department of Biodiversity, Conservation and Attractions

*Presenter: Ed Hatherley*

## **6 Officer/ Delegate Reports**

### **6.1 DFES**

*Reporting Officer: Paul Dennison - DFES*

DFES LSW Region Report – 11 June 2024 (see attached)



Government of **Western Australia**  
Department of **Fire & Emergency Services**



## City of Busselton BFAC Meeting

DFES LSW Region Report – 11<sup>th</sup> June 2024

- **International Firefighters Day**

Thanks to all those that attended the International Firefighters Day service held at Busselton Fire Station. The service was one of the biggest days we have had in its history. Next year we will conduct the service on the Saturday before the official day, so it doesn't conflict with the Perth Service.

- **WAFES Conference 2024**

A fitting theme, plus two fascinating keynote speakers, have been confirmed for the 2024 WAFES Conference. Held at Crown Perth on Friday 6 and Saturday 7 September, the 2024 WAFES Conference will explore the theme of Yesterday, today, tomorrow: celebrating our heritage, embracing innovation and planning for the challenges of the future.

Two engaging keynote speakers have also been confirmed for the 2024 WAFES Conference:

- Dr Alan Thompson – best-selling author and world expert in artificial intelligence.
- Kendall Whyte – 2022 WA Young Australian of the Year and founder of the Blue Tree Project.

Congratulations to this year's finalists from the LSW region,

- **Volunteer Fire and Emergency Services Individual Achievement Award**
  - Peter Stark, Lower South West Region Volunteer Fire and Emergency Services
- **SES Youth Achievement Award**
  - Joshua Yates, Margaret River State Emergency Service
- **Marine Rescue Individual Achievement Award**
  - Fabio Renzullo, Marine Rescue Windy Harbour

- **Bushfire Season**

This year's High Threat period (bushfire season) was extended to the 11<sup>th</sup> of April for the LSW region. The region did extend the on call and zones responses until the 26<sup>th</sup> of April.

Thanks to all the volunteers for the great support you gave locally and externally with Task Force deployments.

- **Australian Warning System (AWS)**

A significant change to alerts and warnings in Western Australia is coming soon with DFES adopting national consistency through the Australian Warning System (AWS). The AWS colours and icons were successfully applied to bushfire warnings in 2021 and from mid-2024, cyclone, flood and storm warnings will also adopt the new system.

A new online awareness module has been developed and is available to volunteers and staff via the eAcademy.





Government of **Western Australia**  
Department of **Fire & Emergency Services**



- **VERA Awards Nominations Open**

The Volunteer Employer Recognition Awards acknowledge the important role employers and self-employed volunteers play in the delivery of emergency services across Western Australia, where more than 95 percent of emergency services personnel are volunteers.

A supportive employer and flexible workplace enables emergency services volunteers to take time off work to attend critical emergency incidents and vital training. Many self-employed volunteers go above and beyond for their communities, often closing their doors during emergencies, even when it impacts their livelihoods.

If you know an employer that supports emergency services volunteers to carry out their duties, nominate then today.

Peter Thomas

**District Officer Capes - LSW**

## 6.2 COB/ DFES

*Reporting Officer: Rachel Runco – Manager Community Safety  
Matt du Plessis – Community Emergency Services Manager*

### **Recommendation**

**That the Committee:**

- 1. Receives and notes the Emergency Services Update Report.**
- 2. Supports formation of working group to review City of Busselton's Prohibited and Restricted Burning period exclusions.**

### **SUMMARY**

This report provides the overview of the operations and activities of City's Volunteer Bush Fire Brigades for the region.

### **BACKGROUND**

Under the Bush Fires Act 1954, the City is responsible to make provisions about the organisation, establishment, maintenance, and equipment of bush fire brigades. The City achieves this through the provision of Prevention, Preparedness, Response and Recovery functions to provide a comprehensive approach to emergency management within the City. This is delivered by:

**Prevention:** The City administers and enforces the appropriate fire prevention provisions of the Bush Fires Act 1954. The City promotes and participates in appropriate community safety programs in consultation with DFES (Department of Fire and Emergency Services).

**Preparedness:** In addition to the applicable community safety programs identified against prevention, the City, through their staff and infrastructure, supports the emergency services preparedness programs developed and implemented by DFES. The City ensures that their bush fire brigade volunteers are trained to the appropriate levels.

**Response:** The City responds to day-to-day incidents through the turnout of the Bush Fire Brigades. City support, including access to volunteers, appliances and other resources as required, is extended to DFES controlled incidents when requested by the Incident Controller.

**Recovery:** The City undertakes recovery actions in accordance with its role as documented in the Emergency Management Act 2005.

**Management and Administration:** The City provides leadership and support to the development and management of their local emergency management arrangements. The City appoints a Community Emergency Services Manager to deliver the emergency services within the City. In addition to this, the City appoints a Bushfire Mitigation Officer and a Ranger and Emergency Services Administration Officer to support service delivery.



## OFFICER COMMENT

### Significant Incidents in the City of Busselton region

Nil

### Deployments

The City provided support to the following incidents outside of the region:

- Level 2 Walpole Fire (26 – 27 April 2024)
  - Hithergreen 3.4 Appliance
  - **Total Volunteer Firefighters = 3**
- Level 2 Koomba Storm (2 June 2024)
  - Community Emergency Services Manager attended as Supply Officer

### Statistics update

The incident summary details all incidents responded by both DFES Volunteer Fire & Rescue Services and the City of Busselton Bush Fire Brigades up until 2 May 2024.

Large bushfires are down by 21% on the 5-year trend and small bushfires are down by 8%. There is an 40% increase of other/rubbish/vehicle fires.

The top three causes (reported) of ignition are:

1. Suspicious/Deliberate (9),
2. Powerlines (7) and
3. Burn off fires (4), Cigarette (4), Weather Conditions (High winds, natural combustion etc. Excludes Lightning) (4)

It is noted that there are 14 unreported causes.

### Incidents: Year to Date Comparison: July 1 to May 2

Incident Type	2019/2020	2020/2021	2021/2022	2022/2023	2023/2024	Average Excluding 2023/2024	% TREND this year
Called Off - No Attendance	55	21	19	27	21	30.5	-31.15%
False Alarm - System Initiated	66	57	64	66	66	63.3	4.35%
False Call - Good Intent	48	50	50	44	45	48.0	-6.25%
False Call - Malicious	1	0	0	0	1	0.3	0.00%
Fire - Bushfire (lge)	5	15	14	12	9	11.5	-21.74%
Fire - Bushfire (sml)	60	53	29	49	44	47.8	-7.85%
Fire - Other/Rubbish/Vehicle	36	29	30	25	42	30.0	40.00%
Fire - Structure	18	14	15	15	13	15.5	-16.13%
General Service Calls	0	2	2	1	4	1.3	220.00%
Hazardous Situation	10	8	10	16	7	11.0	-36.36%
Natural Hazard	3	12	31	9	28	13.8	103.64%
Rescue & Medical	44	44	57	46	29	47.8	-39.27%
Road Crash & Rescue	38	41	46	35	46	40.0	15.00%
Search	13	16	7	13	13	12.3	6.12%
<b>Totals:</b>	<b>397</b>	<b>362</b>	<b>374</b>	<b>358</b>	<b>368</b>	<b>372.75</b>	<b>-1.27%</b>

% TREND compares this FY to the Average.

## Hectares lost

This season is on par with 2022/2023 season with 32 hectares lost.

Size of fires is not always available; fires less than 1 hectare are not included.

Hectares Lost	2019/2020	2020/2021	2021/2022	2022/2023	2023/2024
All Bushfires	4	53	427	32	32

## Bush Fire Brigade Memberships

The below chart shows the summary of the City's Bush Fire Brigades memberships up until 1 May 2024. Membership has seen an increase of **55 more** members from May 2023 figures. This is a 15% increase of membership across the brigades.

Volunteer Summary for LGIS	Age Group					
Volunteer Position	<=18	<=55	56-65	66-70	71+	Total
Junior or Cadet Rank	1	0	0	0	0	1
Active Operational	1	224	67	46	50	388
Non-Operational	0	10	7	5	11	33
Vol Leave of Absence	0	3	0	0	0	3
<b>Total</b>	<b>2</b>	<b>237</b>	<b>74</b>	<b>51</b>	<b>61</b>	<b>425</b>

## Training

The following courses have been delivered:

- o AllIMS Awareness x 1
  - o 16 March
    - 4 persons attended
- o Bushfire Safety Awareness
  - o 6 – 7 April
    - 17 persons attended
- o Fire Fighting Skills
  - o 4 – 5 May
    - 12 persons attended
  - o 25 – 26 May
    - 5 persons attended

Courses to be completed throughout Winter and Spring are:

- o Bushfire Safety Awareness
  - o 6 – 7 July
  - o 31 August – 1 September
- o Fire Fighting Skills
  - o 3 – 4 August
  - o 12 – 13 July
- o Incident Controller Refresher
  - o 12 October
- o Ground Controller
  - o 20 October
  - o 2 November
- o WAERN Refresher – on request
- o Trainers Workshop

**Grants:**

**WA Disaster Ready Fund (DRF) 2024/25** submission for 5 x Electronic Fire Danger Rating Signs. If successful, funding likely to be received in the first quarter of 2025. Locations as follows:

- o 2259 Caves Rd, Yallingup ( Yallingup Hall Intersection)
- o Moses Rock Road x Caves Road (100m North on Caves Road)
- o Cornerstone Way x Commonage Road (100m South of intersection on Commonage Rd)
- o Wildwood Rd x Bussell HWY Carburnup River Store (200m Northeast on Busselton Highway)
- o Vasse Hwy x Neville Hyder Dr near Airport (200m North of intersection Vasse Hwy x Neville Hyder Dr)

**WA Disaster Ready Fund (DRF) 2024/25** joint submission with the Australian Red Cross (ARC) ,Department of Fire and Emergency Services and the City of Busselton to implement a disaster resilience program known as RediCommunities within the local government area. The ARC will be the lead agency in this program which will run over 24 months.

RediCommunities creates opportunities for community members to connect and work together to develop locally appropriate, community-led activities to strengthen their resilience. Workshops are adaptable depending on the context of your community, and can include:

- Understanding disasters and their impacts.
- Community mapping exercises.
- Understanding the shared responsibilities of individuals, communities, government, and emergency services before, during and after disasters.
- Assessing and understanding current community resilience strengths and areas for improvement through the use of the RediCommunities Resilience Assessment Tool.
- Understanding the importance of community connectedness, wellbeing, security, and access to information.
- Development of community-owned resilience action plans.

**WA Disaster Ready Fund (DRF) 2024/25** Department of Fire and Emergency Services Community Preparedness Directorate have put forward a submission for DRF to support the delivery of a number of Disability Inclusive Emergency Planning forums across the state. The City of Busselton was successful in our application to DFES to be included for a forum should the grant application be successful. This stems on from the PCEP work we commenced in October/November 2023 as part of the Community preparedness week.

**Project/s:****Prohibited and Restricted Burning Review**

Throughout July and August 2024, a review of the **Prohibited and Restricted Burning** controls is planned. The City is seeking nominations from BFAC (Bushfire Advisory Committee) for participation in a working group who will support officers with this review, with the outcomes to be presented to the BFAC members for endorsement at the September 2024 meeting. The review will investigate the risk and subsequent recommendations for lighting fires during restricted and prohibited burning for the following areas:

- Camping fires
- Cooking fires
- Cooking appliances:
  - BBQ's (enclosed Weber type/smokers)
  - Woodfired Pizza Ovens
- Fire Pits
- Braziers

The City of Busselton's website will be updated to ensure residents and visitors to the region will have clear guidelines on what they can and cannot do during restricted and prohibited burning.

**Bush Fire Brigade Operating Procedures**

The DRAFT Bush Fire Brigade Operating Procedures have been completed and distributed to the following brigades for review:

- Eagle Bay BFB
- Yallingup Rural BFB
- Yallingup Coastal BFB
- Dunsborough BFB
- Vasse BFB
- Metricup BFB

Feedback has been received and once updated, this Draft will be sent to BFAC for final endorsement.

**Dunsborough Bush Fire Brigade Facility**

Over the past three months, a working group was formed to progress the development of design and concept plans of the new bushfire brigade facility on Balmoral drive.

This working group included representation from DFES, Chief Bush Fire Control Officer and Deputy Chief Bush Fire Control Officer, and FCOs from Dunsborough BFB, Vasse BFB, Yallingup Rural BFB, and City officers. Through this working group it has been determined that the Dunsborough BFB will relocate to this new facility as their main hub upon completion. There will be a review of FCO area boundaries prior to this relocation.

Concept designs have now been completed for the new Dunsborough BFB Facility in Balmoral Drive. Detailed designs will be developed over the upcoming months with the intention that construction commence in 24/25 or 25/26 financial years, dependant on funding. Timeframe for the build once commenced will be two years.

**Statutory Environment**

Bushfires Act 1954  
Bush Fire Regulations 1954  
Emergency Management Act 2005  
Work Health and Safety Act 2020  
Local Government Act 1995  
Bush Fire Brigade Local Law 2023  
Fire and Emergency Services Legislation

**TIMELINE**

Milestone	Completion Date
Bush Fire Brigade Operating Procedures	31 July 2024
Prohibited and Restricted Burning Review	31 August 2024

### 6.3 Bushfire Mitigation Update Report

*Reporting Officer: Neil McKay - Bushfire Mitigation Officer*

#### **Status update of currently approved and funded mitigation activity works**

The City received \$210,000 under 2023/2024 Round 2 Mitigation Activity Fund Grant (MAFG) in December 2023, approved for 17 mitigation activities.

To date the approved works in 10 locations have been completed, totalling an expenditure of \$134,834.

There are 7 outstanding treatments.

Four are planned burns that require favourable conditions to complete. If not concluded by June 20 these burns will be deferred.

Two are chemical treatments that are no longer deemed necessary.

- I) Follow up treatment from mechanical clearing completed on a section of Cape-Naturaliste Road. However following assessment by the City environmental team, this was no longer deemed necessary due to the period lapsed.
- II) Vasse Diversion drain reserve follow up treatment post mechanical works. Due to the environmental sensitivities in this location a decision was made by the Environmental team that these works were no longer supported.

Lastly, a mechanical treatment to create a 10m wide fire break in the reserve at the corner of Caves Rd and Marrinup Dr as pre-work for a potential future prescribed burn. The reserve borders National Park to the south and has an existing track approximately 20m-30m from the boundary (inside the National Park). Initial conversations with DPAW to use the track as a burn edge instead of creating a new track have been positive and recommended, therefore our treatment is considered no longer required.

The Reserve is also currently owned by Main Roads and vested to the City to manage but is being considered for inclusion into the National Park and therefore on completion of the transfer of ownership would no longer be the City's responsibility to manage.

#### **Mitigation works completed from general revenue:**

- Tree removed blocking gate to EAW off Berwick Pl
- Tree removed blocking EAW off Green Park Rd
- Tree removed blocking EAW gate off Blue Water Ct
- Chemical Spray of EAW off Old Mill Grove
- Addition of Signage to EAW off Ridgeway Dr
- Various Padlocks to EAW gates replaced or repaired

In progress:

Request to repair broken fire access track gate in Reinscourt.

Request to repair broken fire access track gate on Cowrang Lane.

### Future mitigation activity works - MAFG

The City has submitted an application for 46 mitigation treatments valued at \$500,000 to be funded under 2024/2025 Round 1 of MAFG.

- 12 Follow up Chemical Treatments
- 21 Fire Access Roads / Tracks
- 9 Mechanical Work
- 4 Prescribed Burns

The primary focus of this application is to improve the status and condition of our fire access Tracks ensuring that they are driveable and clear of obstructions.

A summary of the application can be found in attachment one.

### TIMELINE

Milestone	Commence Date	Completion Date	Progress
2024/2025 Mitigation Activity Fund Grant Round 1 Application – Application has been submitted and is being reviewed by DFES.	NA	25 April 2024	Submitted
2023/2024 Mitigation Activity Fund Grant Round 2 Acquittal – Finalise treatments for current round. All treatments to be completed or closed by 21 <sup>st</sup> to allow time to process final payments.	1 <sup>st</sup> May 2024	30 June 2024	In Progress
2024/2025 Mitigation Activity Fund Grant Round 1. Receive notification of approved treatments. Raise purchase orders and/or send out request for quotes for contractors to begin work.	1 July 2024	31 December 2024	Yet to commence
2024/2025 Mitigation Activity Fund Grant Round 2 Application – Begin preparations for the next round application. Identify and prepare treatments.	Now	~ September 2024	In Progress
2024/2025 Mitigation Activity Fund Grant Round 1 Acquittal - Finalise treatments.	~ November 2024		Yet to commence



Milestone	Commence Date	Completion Date	Progress
2024/2025 Mitigation Activity Fund Grant Round 2 Receive notification of approved treatments. Raise purchase orders and/or send out request for quotes for contractors to begin work.	~ January 2025		Yet to commence

**Mitigation Activity**

In addition to approved treatments funded by the MAF programme we have submitted a bid for funding from general revenue in the 2024/2025 budget. 8 tracks have been identified at an estimated cost of \$185,000 to complete. This work is not eligible for funding through the MAF Programme as the treatments are not located within crown land, but locations have been identified as important connections within the City strategic fire break network.

Attachment 2 provides a summary of the completed EAW inspections to date and the tracks identified for treatment.

**Bushfire Risk Management Plan Review**

The Bushfire Risk Management Plan is due for renewal by May 2025. The City will be seeking nominations from BFAC for participation in a working group to support officers with this review shortly through an EOI process.

BFAC will be provided updates on the status of this project as it progresses, and the revised plan will be presented to BFAC for endorsement prior to adoption by Council.

Treatment ID	Treatment Type	Treatment Summary	Primary Asset Name	(Priority) Risk Rating
3170	Fire Access Road / Track(s)	Clearing of fire access track on City Managed Road reserve at the Cnr of Smiths Beach and Canal Rocks Road	Canal Rocks Road YALLINGUP (40/-86)	2C
5404	Fire Access Road / Track(s)	Clearing of the fire access track around Glover Road estate	Glover Road YALLINGUP SIDING	1A
7229	Planned Burning	Prescribed burn for Yoongie Hall Reserve PB 3	Vasse Road x Yoongarillup Road YOONGARILLUP	2C
17219	Fire Access Road / Track(s)	Clearing and removal of vegetation along fire access track to improve vehicle access.	Marron Rise YALLINGUP	1A
26816	Planned Burning	BFB Requested - Conduct a prescribed burn in the Reserve East of Reidel Park	Ella Gladstone Drive EAGLE BAY	3A
26821	Mechanical Works	Continuation of clearing work along Canal Rocks road.	Smiths Beach Resort 67 Smiths Beach Road YALLINGUP	1B
26827	Mechanical Works	Reduce ground fuels around Yallingup Community Hall, mulching of ground vegetation and uplifting canopies	Yallingup Community Hall	1A
26847	Fire Access Road / Track(s)	Clearing and removal of vegetation along fire access track to improve vehicle access.	71-87 The Dell Retreat YALLINGUP	1A
26862	Fire Access Road / Track(s)	Clearing and removal of vegetation along fire access track to improve vehicle access.	Okapa Rise (East) DUNSBOROUGH	2A
26864	Fire Access Road / Track(s)	Clearing and removal of vegetation along fire access track to improve vehicle access.	Vidler Road Refuse Site 48 Western Cape Drive NATURALISTE	2A

26888	Mechanical Works	Fuel reduction through clearing and removal of vegetation from Reserve Stage 1	2-14 Martingale Drive DUNSBOROUGH	1A
26889	Mechanical Works	Fuel reduction through clearing and removal of vegetation from Reserve Stage 2	2-14 Martingale Drive DUNSBOROUGH	1A
26895	Planned Burning	BFB Requested - Conduct a prescribed burn in section of Ambergate Reserve adjacent to Residential property	Ambergate Reserve Doyle Road AMBERGATE	2C
26896	Mechanical Works	Clearing and removal of vegetation along reserve to increase the fuel separation zone	Vidler Road Refuse Site 48 Western Cape Drive NATURALISTE	2A
26898	Fire Access Road / Track(s)	Clearing and removal of vegetation along fire access track to improve vehicle access.	Seascape Rise x Summer Brace YALLINGUP	1A
26907	Chemical Works	Follow-up chemical treatment after completing of Treatment #5404	Glover Road YALLINGUP SIDING	1A
26918	Fire Access Road / Track(s)	Clearing and removal of vegetation along fire access track to improve vehicle access.	Carbanup Town Wildwood Road x Bussell Hwy CARBANUP RIVER	1C
26957	Fire Access Road / Track(s)	Clearing and removal of vegetation along fire access track to improve vehicle access.	Koopin Place QUEDJINUP	1A
26978	Chemical Works	Follow-up chemical treatment #17219.	Marron Rise YALLINGUP	1A
26979	Fire Access Road / Track(s)	Clearing and removal of vegetation along fire access track to improve vehicle access.	Marron Rise YALLINGUP	1A
26980	Chemical Works	Follow-up chemical treatment #26979.	Marron Rise YALLINGUP	1A

26981	Fire Access Road / Track(s)	Clearing and removal of vegetation along fire access track to improve vehicle access.	Marron Rise YALLINGUP	1A
26982	Chemical Works	Follow-up chemical after treatment #26981.	Marron Rise YALLINGUP	1A
26983	Fire Access Road / Track(s)	Clearing and removal of vegetation along fire access track to improve vehicle access and to re-establish a low fuel break in Reserve.	156-198 Ridgeway Drive QUEDJINUP	1A
26984	Chemical Works	Follow-up chemical treatment after completion of Treatment 26983.	156-198 Ridgeway Drive QUEDJINUP	1A
26986	Fire Access Road / Track(s)	Clearing and removal of vegetation along fire access track to improve vehicle access.	Carnarvon Castle Drive Subdivision EAGLE BAY	1C
26987	Chemical Works	Follow up Chemical treatment following completion of MAF# 26986.	Carnarvon Castle Drive Subdivision EAGLE BAY	1C
26989	Chemical Works	Follow-up chemical Treatment completed last round.	St Andrews Lane AMBERGATE	3A
26990	Chemical Works	Follow up chemical treatment after clearing completed under MAF #16988 and earlier in 2023.	Yallingup Beach Holiday Village 186 Yallingup Beach Road YALLINGUP	1A
26991	Chemical Works	Follow up chemical spray after completing clearing under MAF#13434 and MAF#26821 Canal Rocks Rd.	Smiths Beach Resort 67 Smiths Beach Road YALLINGUP	1B
26992	Chemical Works	Follow up chemical spray after clearing completed under MAF#16989.	Yallingup Lodge 40 Hemsley Road NATURALISTE	1A
27007	Chemical Works	Follow up chemical treatment after completion of MAF# 26896 .	Vidler Road Refuse Site 48 Western Cape Drive NATURALISTE	2A

27028	Mechanical Works	Re-establish a low fuel zone/buffer between the Reserve and residential properties on the N edge.	Cape Care Aged Care Facility Dunsborough	1A
27029	Chemical Works	Follow-up chemical treatment after completing MAF#27028.	Cape Care Aged Care Facility Dunsborough	1A
27084	Mechanical Works	Reduce fuel load in an area of dead and dying mealecuas close to residential properties.	Seaview Rise EAGLE BAY	1A
27122	Fire Access Road / Track(s)	Clearing and removal of vegetation along fire access track to improve vehicle access.	Wisteria Drive QUINDALUP	1C
27390	Fire Access Road / Track(s)	Yallingup townsite protection zone - Remove and mulch vegetation to Re-establish firebreak / low fuel area within reserve.	Yallingup Coastal Fire Shed 24 Valley Road YALLINGUP	1A
27570	Fire Access Road / Track(s)	Clearing and removal of vegetation along fire access track to improve vehicle access.	Lochinvar Place & Berwick Place QUEDJINUP	3A
27571	Fire Access Road / Track(s)	Clearing and removal of vegetation along fire access track to improve vehicle access.	The Dell x Butterly Road YALLINGUP	1C
27819	Mechanical Works	Pre-prescribed burn preparation (under MAF# 26816) - clearing of edges prior to burn	Eagle Bay Mellup Road 1 & 3 EAGLE BAY	1A
27822	Fire Access Road / Track(s)	Clearing and removal of vegetation along fire access track to improve vehicle access.	Broyage Retreat QUINDALUP	1A
27826	Fire Access Road / Track(s)	To remove a large boulder blocking vehicle access (ingress and egress) to the start of the fire access track and replace it with a gate to help restrict access by unauthorised vehicles. To be completed by June 2025.	Hebrides Close QUEDJINUP	2A
27839	Planned Burning	Conduct a prescribed burn in one or both pockets indicated in Carbanup Reserve.	Carbanup Town Wildwood Road x Bussell Hwy CARBANUP RIVER	1C

27897	Mechanical Works	Clearing and removal of vegetation along Wyadup Road to improve vehicle access, visibility and safety.	Sainsbury Loop x Brazier Cove YALLINGUP	1B
27898	Fire Access Road / Track(s)	Maintenance on entrance to a fire access track to restore access control to track	Marron Rise YALLINGUP	1A
27955	Fire Access Road / Track(s)	Clearing and removal of vegetation along fire access track to improve vehicle access.	Corymbia Close YALLINGUP	1A

## EAW Review Summary

To date a review of 14 EAWs (approximately 15km of 85km registered) has been completed and 8 have been identified as requiring one-off work to return them to a serviceable standard.

The required work would involve the mechanical clearing of vegetation that was found to be growing on and/or into the EAW including some uplifting and possible removal of established trees. This would improve visibility, ingress and egress along the full length of each track and bring them up to a standard deemed serviceable.

This work can be completed by a qualified arborist and Table 1 outlines the estimated costs for this initial work. A more detailed summary of the completed reviews can be found on Table 2.

Table 1

EAW	Work Required	
	at this time	Estimated Cost
Butterly Road East - 1153m	No	
The Dell Retreat North - 825m	Yes	\$ 35,000.00
Commonage Road 1 (Finishes at Butterly) – 1170m	Yes	\$ 15,000.00
Commonage Road 2 (Finishes at Butterly) – 875	No	\$ 15,000.00
Commonage Road 3 - 846m	No	
Lombo View North – 555m	Yes	\$ 25,000.00
Lombo View South – 745m	No	
Hayes Road – 2616m	No	
Glover Road – Vasse-Yallingup Siding - 684m	Yes	\$ 15,000.00
Marrinup Drive to Commonage Road – 2601m	Yes	\$ 35,000.00
Bronzewing Road to Quedjanup Dr -1080m	No	
Lochinvar Place to Biddle Road – 450m	Yes	\$ 15,000.00
Biddle Road to near Berwick Pl – 400m	Yes	\$ 15,000.00
Autum Rise - 1065m	Yes	\$ 15,000.00
		<b>\$ 185,000.00</b>

*Estimates vary based on the length of track, amount of vegetation to be cleared, the potential resources required and complexity of the work and the estimated time to complete.*

Most of the tracks inspected are not suitable for 2wd vehicles and would serve primarily as access for firefighting appliances. Further analysis and costings would be required if 2wd access is required for some or all of these tracks..

\*Based on current averaged contracted rates per km for mechanical treatments




EAW Details  
Table 2 - Details

Image	Description
	<p><b>Butterly Road East - 1153m</b></p> <p>Section 1 Undeveloped dirt area passing through multiple properties with gates at each boundary. Suitable for 4x4 Light and heavy appliances.</p> <p>Section 2 Also undeveloped, however ground is more solid and could allow a 2wd vehicle to pass. Through Lot 33 becomes more gravel based. Other than surface restrictions the track is clear of obstacles.</p> <p><b>Signage faded or missing at start and end of track.</b></p>




**FIRE MANAGEMENT PLAN PROVISIONS**

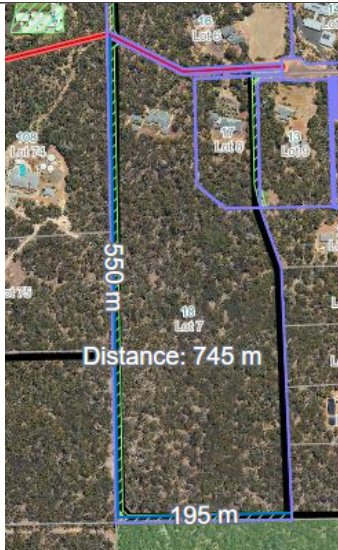

1. Strategic firebreaks shown on this plan for the subdivision of Subsite 104 (B4) shall be cleared to the width & constructed to the width, with a base suitable for trafficability with a 2-wheel drive vehicle and 20m long passing loop every 20m. These strategic firebreaks are to be maintained to this standard at the time of subdivision and will be incorporated to this standard at the time of subdivision. These strategic firebreaks are to be constructed within an easement to protect long term permeability and maintenance.
2. Internal firebreaks shall be 10m wide with vertical clearance of vegetation and be maintained at least 10m wide of Subsite 104 (B4) except for the 10m wide firebreak shown on this plan. These firebreaks are to be maintained to this standard at the time of subdivision and will be incorporated to this standard at the time of subdivision.
3. Strategic firebreaks will be available and sufficient for emergency personnel in times of emergency and for access to the site.
4. The internal firebreak on lots 1, 12, 13, 14, 15, 16, 17, 18, 19, 20, 21, 22, 23, 24, 25, 26, 27, 28, 29, 30, 31, 32, 33, 34, 35, 36, 37, 38, 39, 40, 41, 42, 43, 44, 45, 46, 47, 48, 49, 50, 51, 52, 53, 54, 55, 56, 57, 58, 59, 60, 61, 62, 63, 64, 65, 66, 67, 68, 69, 70, 71, 72, 73, 74, 75, 76, 77, 78, 79, 80, 81, 82, 83, 84, 85, 86, 87, 88, 89, 90, 91, 92, 93, 94, 95, 96, 97, 98, 99, 100, 101, 102, 103, 104, 105, 106, 107, 108, 109, 110, 111, 112, 113, 114, 115, 116, 117, 118, 119, 120, 121, 122, 123, 124, 125, 126, 127, 128, 129, 130, 131, 132, 133, 134, 135, 136, 137, 138, 139, 140, 141, 142, 143, 144, 145, 146, 147, 148, 149, 150, 151, 152, 153, 154, 155, 156, 157, 158, 159, 160, 161, 162, 163, 164, 165, 166, 167, 168, 169, 170, 171, 172, 173, 174, 175, 176, 177, 178, 179, 180, 181, 182, 183, 184, 185, 186, 187, 188, 189, 190, 191, 192, 193, 194, 195, 196, 197, 198, 199, 200, 201, 202, 203, 204, 205, 206, 207, 208, 209, 210, 211, 212, 213, 214, 215, 216, 217, 218, 219, 220, 221, 222, 223, 224, 225, 226, 227, 228, 229, 230, 231, 232, 233, 234, 235, 236, 237, 238, 239, 240, 241, 242, 243, 244, 245, 246, 247, 248, 249, 250, 251, 252, 253, 254, 255, 256, 257, 258, 259, 260, 261, 262, 263, 264, 265, 266, 267, 268, 269, 270, 271, 272, 273, 274, 275, 276, 277, 278, 279, 280, 281, 282, 283, 284, 285, 286, 287, 288, 289, 290, 291, 292, 293, 294, 295, 296, 297, 298, 299, 300, 301, 302, 303, 304, 305, 306, 307, 308, 309, 310, 311, 312, 313, 314, 315, 316, 317, 318, 319, 320, 321, 322, 323, 324, 325, 326, 327, 328, 329, 330, 331, 332, 333, 334, 335, 336, 337, 338, 339, 340, 341, 342, 343, 344, 345, 346, 347, 348, 349, 350, 351, 352, 353, 354, 355, 356, 357, 358, 359, 360, 361, 362, 363, 364, 365, 366, 367, 368, 369, 370, 371, 372, 373, 374, 375, 376, 377, 378, 379, 380, 381, 382, 383, 384, 385, 386, 387, 388, 389, 390, 391, 392, 393, 394, 395, 396, 397, 398, 399, 400, 401, 402, 403, 404, 405, 406, 407, 408, 409, 410, 411, 412, 413, 414, 415, 416, 417, 418, 419, 420, 421, 422, 423, 424, 425, 426, 427, 428, 429, 430, 431, 432, 433, 434, 435, 436, 437, 438, 439, 440, 441, 442, 443, 444, 445, 446, 447, 448, 449, 450, 451, 452, 453, 454, 455, 456, 457, 458, 459, 460, 461, 462, 463, 464, 465, 466, 467, 468, 469, 470, 471, 472, 473, 474, 475, 476, 477, 478, 479, 480, 481, 482, 483, 484, 485, 486, 487, 488, 489, 490, 491, 492, 493, 494, 495, 496, 497, 498, 499, 500, 501, 502, 503, 504, 505, 506, 507, 508, 509, 510, 511, 512, 513, 514, 515, 516, 517, 518, 519, 520, 521, 522, 523, 524, 525, 526, 527, 528, 529, 530, 531, 532, 533, 534, 535, 536, 537, 538, 539, 540, 541, 542, 543, 544, 545, 546, 547, 548, 549, 550, 551, 552, 553, 554, 555, 556, 557, 558, 559, 560, 561, 562, 563, 564, 565, 566, 567, 568, 569, 570, 571, 572, 573, 574, 575, 576, 577, 578, 579, 580, 581, 582, 583, 584, 585, 586, 587, 588, 589, 590, 591, 592, 593, 594, 595, 596, 597, 598, 599, 600, 601, 602, 603, 604, 605, 606, 607, 608, 609, 610, 611, 612, 613, 614, 615, 616, 617, 618, 619, 620, 621, 622, 623, 624, 625, 626, 627, 628, 629, 630, 631, 632, 633, 634, 635, 636, 637, 638, 639, 640, 641, 642, 643, 644, 645, 646, 647, 648, 649, 650, 651, 652, 653, 654, 655, 656, 657, 658, 659, 660, 661, 662, 663, 664, 665, 666, 667, 668, 669, 670, 671, 672, 673, 674, 675, 676, 677, 678, 679, 680, 681, 682, 683, 684, 685, 686, 687, 688, 689, 690, 691, 692, 693, 694, 695, 696, 697, 698, 699, 700, 701, 702, 703, 704, 705, 706, 707, 708, 709, 710, 711, 712, 713, 714, 715, 716, 717, 718, 719, 720, 721, 722, 723, 724, 725, 726, 727, 728, 729, 730, 731, 732, 733, 734, 735, 736, 737, 738, 739, 740, 741, 742, 743, 744, 745, 746, 747, 748, 749, 750, 751, 752, 753, 754, 755, 756, 757, 758, 759, 760, 761, 762, 763, 764, 765, 766, 767, 768, 769, 770, 771, 772, 773, 774, 775, 776, 777, 778, 779, 780, 781, 782, 783, 784, 785, 786, 787, 788, 789, 790, 791, 792, 793, 794, 795, 796, 797, 798, 799, 800, 801, 802, 803, 804, 805, 806, 807, 808, 809, 810, 811, 812, 813, 814, 815, 816, 817, 818, 819, 820, 821, 822, 823, 824, 825, 826, 827, 828, 829, 830, 831, 832, 833, 834, 835, 836, 837, 838, 839, 840, 841, 842, 843, 844, 845, 846, 847, 848, 849, 850, 851, 852, 853, 854, 855, 856, 857, 858, 859, 860, 861, 862, 863, 864, 865, 866, 867, 868, 869, 870, 871, 872, 873, 874, 875, 876, 877, 878, 879, 880, 881, 882, 883, 884, 885, 886, 887, 888, 889, 890, 891, 892, 893, 894, 895, 896, 897, 898, 899, 900, 901, 902, 903, 904, 905, 906, 907, 908, 909, 910, 911, 912, 913, 914, 915, 916, 917, 918, 919, 920, 921, 922, 923, 924, 925, 926, 927, 928, 929, 930, 931, 932, 933, 934, 935, 936, 937, 938, 939, 940, 941, 942, 943, 944, 945, 946, 947, 948, 949, 950, 951, 952, 953, 954, 955, 956, 957, 958, 959, 960, 961, 962, 963, 964, 965, 966, 967, 968, 969, 970, 971, 972, 973, 974, 975, 976, 977, 978, 979, 980, 981, 982, 983, 984, 985, 986, 987, 988, 989, 990, 991, 992, 993, 994, 995, 996, 997, 998, 999, 1000, 1001, 1002, 1003, 1004, 1005, 1006, 1007, 1008, 1009, 1010, 1011, 1012, 1013, 1014, 1015, 1016, 1017, 1018, 1019, 1020, 1021, 1022, 1023, 1024, 1025, 1026, 1027, 1028, 1029, 1030, 1031, 1032, 1033, 1034, 1035, 1036, 1037, 1038, 1039, 1040, 1041, 1042, 1043, 1044, 1045, 1046, 1047, 1048, 1049, 1050, 1051, 1052, 1053, 1054, 1055, 1056, 1057, 1058, 1059, 1060, 1061, 1062, 1063, 1064, 1065, 1066, 1067, 1068, 1069, 1070, 1071, 1072, 1073, 1074, 1075, 1076, 1077, 1078, 1079, 1080, 1081, 1082, 1083, 1084, 1085, 1086, 1087, 1088, 1089, 1090, 1091, 1092, 1093, 1094, 1095, 1096, 1097, 1098, 1099, 1100, 1101, 1102, 1103, 1104, 1105, 1106, 1107, 1108, 1109, 1110, 1111, 1112, 1113, 1114, 1115, 1116, 1117, 1118, 1119, 1120, 1121, 1122, 1123, 1124, 1125, 1126, 1127, 1128, 1129, 1130, 1131, 1132, 1133, 1134, 1135, 1136, 1137, 1138, 1139, 1140, 1141, 1142, 1143, 1144, 1145, 1146, 1147, 1148, 1149, 1150, 1151, 1152, 1153, 1154, 1155, 1156, 1157, 1158, 1159, 1160, 1161, 1162, 1163, 1164, 1165, 1166, 1167, 1168, 1169, 1170, 1171, 1172, 1173, 1174, 1175, 1176, 1177, 1178, 1179, 1180, 1181, 1182, 1183, 1184, 1185, 1186, 1187, 1188, 1189, 1190, 1191, 1192, 1193, 1194, 1195, 1196, 1197, 1198, 1199, 1200, 1201, 1202, 1203, 1204, 1205, 1206, 1207, 1208, 1209, 1210, 1211, 1212, 1213, 1214, 1215, 1216, 1217, 1218, 1219, 1220, 1221, 1222, 1223, 1224, 1225, 1226, 1227, 1228, 1229, 1230, 1231, 1232, 1233, 1234, 1235, 1236, 1237, 1238, 1239, 1240, 1241, 1242, 1243, 1244, 1245, 1246, 1247, 1248, 1249, 1250, 1251, 1252, 1253, 1254, 1255, 1256, 1257, 1258, 1259, 1260, 1261, 1262, 1263, 1264, 1265, 1266, 1267, 1268, 1269, 1270, 1271, 1272, 1273, 1274, 1275, 1276, 1277, 1278, 1279, 1280, 1281, 1282, 1283, 1284, 1285, 1286, 1287, 1288, 1289, 1290, 1291, 1292, 1293, 1294, 1295, 1296, 1297, 1298, 1299, 1300, 1301, 1302, 1303, 1304, 1305, 1306, 1307, 1308, 1309, 1310, 1311, 1312, 1313, 1314, 1315, 1316, 1317, 1318, 1319, 1320, 1321, 1322, 1323, 1324, 1325, 1326, 1327, 1328, 1329, 1330, 1331, 1332, 1333, 1334, 1335, 1336, 1337, 1338, 1339, 1340, 1341, 1342, 1343, 1344, 1345, 1346, 1347, 1348, 1349, 1350, 1351, 1352, 1353, 1354, 1355, 1356, 1357, 1358, 1359, 1360, 1361, 1362, 1363, 1364, 1365, 1366, 1367, 1368, 1369, 1370, 1371, 1372, 1373, 1374, 1375, 1376, 1377, 1378, 1379, 1380, 1381, 1382, 1383, 1384, 1385, 1386, 1387, 1388, 1389, 1390, 1391, 1392, 1393, 1394, 1395, 1396, 1397, 1398, 1399, 1400, 1401, 1402, 1403, 1404, 1405, 1406, 1407, 1408, 1409, 1410, 1411, 1412, 1413, 1414, 1415, 1416, 1417, 1418, 1419, 1420, 1421, 1422, 1423, 1424, 1425, 1426, 1427, 1428, 1429, 1430, 1431, 1432, 1433, 1434, 1435, 1436, 1437, 1438, 1439, 1440, 1441, 1442, 1443, 1444, 1445, 1446, 1447, 1448, 1449, 1450, 1451, 1452, 1453, 1454, 1455, 1456, 1457, 1458, 1459, 1460, 1461, 1462, 1463, 1464, 1465, 1466, 1467, 1468, 1469, 1470, 1471, 1472, 1473, 1474, 1475, 1476, 1477, 1478, 1479, 1480, 1481, 1482, 1483, 1484, 1485, 1486, 1487, 1488, 1489, 1490, 1491, 1492, 1493, 1494, 1495, 1496, 1497, 1498, 1499, 1500, 1501, 1502, 1503, 1504, 1505, 1506, 1507, 1508, 1509, 1510, 1511, 1512, 1513, 1514, 1515, 1516, 1517, 1518, 1519, 1520, 1521, 1522, 1523, 1524, 1525, 1526, 1527, 1528, 1529, 1530, 1531, 1532, 1533, 1534, 1535, 1536, 1537, 1538, 1539, 1540, 1541, 1542, 1543, 1544, 1545, 1546, 1547, 1548, 1549, 1550, 1551, 1552, 1553, 1554, 1555, 1556, 1557, 1558, 1559, 1560, 1561, 1562, 1563, 1564, 1565, 1566, 1567, 1568, 1569, 1570, 1571, 1572, 1573, 1574, 1575, 1576, 1577, 1578, 1579, 1580, 1581, 1582, 1583, 1584, 1585, 1586, 1587, 1588, 1589, 1590, 1591, 1592, 1593, 1594, 1595, 1596, 1597, 1598, 1599, 1600, 1601, 1602, 1603, 1604, 1605, 1606, 1607, 1608, 1609, 1610, 1611, 1612, 1613, 1614, 1615, 1616, 1617, 1618, 1619, 1620, 1621, 1622, 1623, 1624, 1625, 1626, 1627, 1628, 1629, 1630, 1631, 1632, 1633, 1634, 1635, 1636, 1637, 1638, 1639, 1640, 1641, 1642, 1643, 1644, 1645, 1646, 1647, 1648, 1649, 1650, 1651, 1652, 1653, 1654, 1655, 1656, 1657, 1658, 1659, 1660, 1661, 1662, 1663, 1664, 1665, 1666, 1667, 1668, 1669, 1670, 1671, 1672, 1673, 1674, 1675, 1676, 1677, 1678, 1679, 1680, 1681, 1682, 1683, 1684, 1685, 1686, 1687, 1688, 1689, 1690, 1691, 1692, 1693, 1694, 1695, 1696, 1697, 1698, 1699, 1700, 1701, 1702, 1703, 1704, 1705, 1706, 1707, 1708, 1709, 1710, 1711, 1712, 1713, 1714, 1715, 1716, 1717, 1718, 1719, 1720, 1721, 1722, 1723, 1724, 1725, 1726, 1727, 1728, 1729, 1730, 1731, 1732, 1733, 1734, 1735, 1736, 1737, 1738, 1739, 1740, 1741, 1742, 1743, 1744, 1745, 1746, 1747, 1748, 1749, 1750, 1751, 1752, 1753, 1754, 1755, 1756, 1757, 1758, 1759, 1760, 1761, 1762, 1763, 1764, 1765, 1766, 1767, 1768, 1769, 1770, 1771, 1772, 1773, 1774, 1775, 1776, 1777, 1778, 1779, 1780, 1781, 1782, 1783, 1784, 1785, 1786, 1787, 1788, 1789, 1790, 1791, 1792, 1793, 1794, 1795, 1796, 1797, 1798, 1799, 1800, 1801, 1802, 1803, 1804, 1805, 1806, 1807, 1808, 1809, 1810, 1811, 1812, 1813, 1814, 1815, 1816, 1817, 1818, 1819, 1820, 1821, 1822, 1823, 1824, 1825, 1826, 1827, 1828, 1829, 1830, 1831, 1832, 1833, 1834, 1835, 1836, 1837, 1838, 1839, 1840, 1841, 1842, 1843, 1844, 1845, 1846, 1847, 1848, 1849, 1850, 1851, 1852, 1853, 1854, 1855, 1856, 1857, 1858, 1859, 1860, 1861, 1862, 1863, 1864, 1865, 1866, 1867, 1868, 1869, 1870, 1871, 1872, 1873, 1874, 1875, 1876, 1877, 1878, 1879, 1880, 1881, 1882, 1883, 1884, 1885, 1886, 1887, 1888, 1889, 1890, 1891, 1892, 1893, 1894, 1895, 1896, 1897, 1898, 1899, 1900, 1901, 1902, 1903, 1904, 1905, 1906, 1907, 1908, 1909, 1910, 1911, 1912, 1913, 1914, 1915, 1916, 1917, 1918, 1919, 1920, 1921, 1922, 1923, 1924, 1925, 1926, 1927, 1928, 1929, 1930, 1931, 1932, 1933, 1934, 1935, 1936, 1937, 1938, 1939, 1940, 1941, 1942, 1943, 1944, 1945, 1946, 1947, 1948, 1949, 1950, 1951, 1952, 1953, 1954, 1955, 1956, 1957, 1958, 1959, 1960, 1961, 1962, 1963, 1964, 1965, 1966, 1967, 1968, 1969, 1970, 1971, 1972, 1973, 1974, 1975, 1976, 1977, 1978, 1979, 1980, 1981, 1982, 1983, 1984, 1985, 1986, 1987, 1988, 1989, 1990, 1991, 1992, 1993, 1994, 1995, 1996, 1997, 1998, 1999, 2000, 2001, 2002, 2003, 2004, 2005, 2006, 2007, 2008, 2009, 2010, 2011, 2012, 2013, 2014, 2015, 2016, 2017, 2018, 2019, 2020, 2021, 2022, 2023, 2024, 2025, 2026, 2027, 2028, 2029, 2030, 2031, 2032, 2033, 2034, 2035, 2036, 2037, 2038, 2039, 2040, 2041, 2042, 2043, 2044, 2045, 2046, 2047, 2048, 2049, 2050, 2051, 2052, 2053, 2054, 2055, 2056, 2057, 2058, 2059, 2060, 2061, 2062, 2063, 2064, 2065, 2066, 2067, 2068, 2069, 2070, 2071, 2072, 2073, 2074, 2075, 2076, 2077, 2078, 2079, 2080, 2081, 2082, 2083, 2084, 2085, 2086, 2087, 2088, 2089, 2090, 2091, 2092, 2093, 2094, 2095, 2096, 2097, 2098, 2099, 2100, 2101, 2102, 2103, 2104, 2105, 2106, 2107, 2108, 2109, 2110, 2111, 2112, 2113, 2114, 2115, 2116, 2117, 2118, 2119, 2120, 2121, 2122, 2123, 2124, 2125, 2126, 2127, 2128, 2129, 2130, 2131, 2132, 2133, 2134, 2135, 2136, 2137, 2138, 2139, 2140, 2141, 2142, 2143, 2144, 2145, 2146, 2147, 2148, 2149, 2150, 2151, 2152, 2153, 2154, 2155, 2156, 2157, 2158, 2159, 2160, 2161, 2162, 2163, 2164, 2165, 2166, 2167, 2168, 2169, 2170,

	<p><b>Commonage Road 1 (Finishes at Butterly) – 1170m</b>  Starts at Commonage as a gravel surface but reduces to dirt which becomes softer as you travel further east. Suitable only for 4x4 light and heavy vehicles. Track passes through multiple gates and becomes firmer and gravel again at the eastern end.</p> <p><b>Some minor vegetation clearing could be done</b> but otherwise track was useable. Signage missing or faded.</p> <p><b>Estimated 2 days work \$15000</b></p>
	<p><b>Commonage Road 2 (Finishes at Butterly) – 875</b>  Starts at Commonage and finishes on Butterly. No gate or signage at Commonage end. Majority of track is gravel or hard dirt, suitable for a 2wd vehicle, however becomes very soft for a section about 100m but can be crossed over to a firmer dirt track area.</p> <p><b>Some minor clear/uplifting could be applied but otherwise track is useable.</b>  <b>Estimated 2 days work \$15000</b></p>

	<p><b>Commonage Road 3 - 846m</b></p> <p>Starts from Commonage Rd and heads East through clear paddock, surface is predominately soft and sandy. At approx. 300m in track is bordered by tall establish trees on left side. Increased leave litter and fallen branches appear on surface. At about 400m it is impassable but access to the adjoining property to the North is possible (over a broken fence). This requires passing through two gates a 3<sup>rd</sup> being impassable requiring moving back into the original property to the South (over a broken fence). The track terminates just beyond this point. Exit is possible via an undocumented track past a dam or by returning to Commonage Road.</p>
--	--

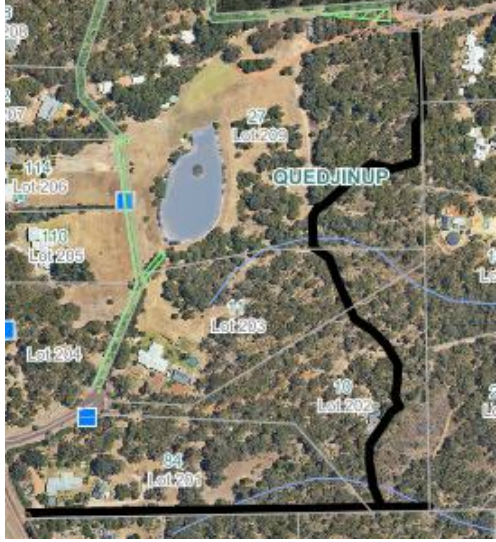
		<p><b>Lombo View North – 555m</b></p> <p>Mostly gravel or hard limestone/dirt surface. 2wd and 4w4 drive accessible Tight corners on the North (East West run) not possible for 4x4 Heavy to pass. (however this is in private property)</p> <p><b>Vegetation clearing, uplifting and spraying required.</b></p> <p><b>Estimated 4 days of work \$25000</b></p>


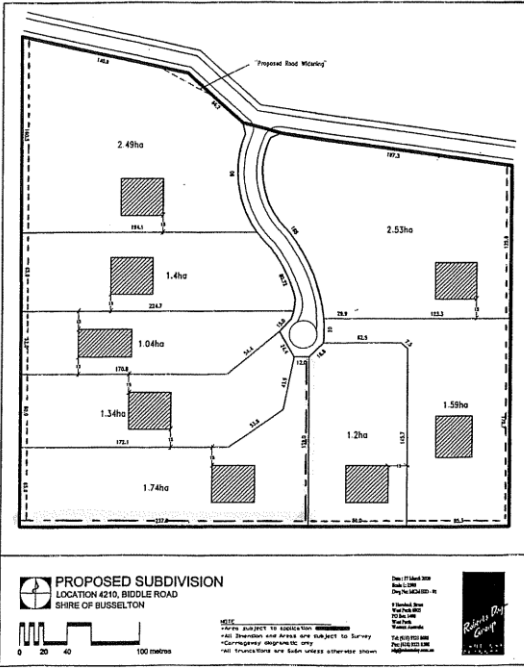


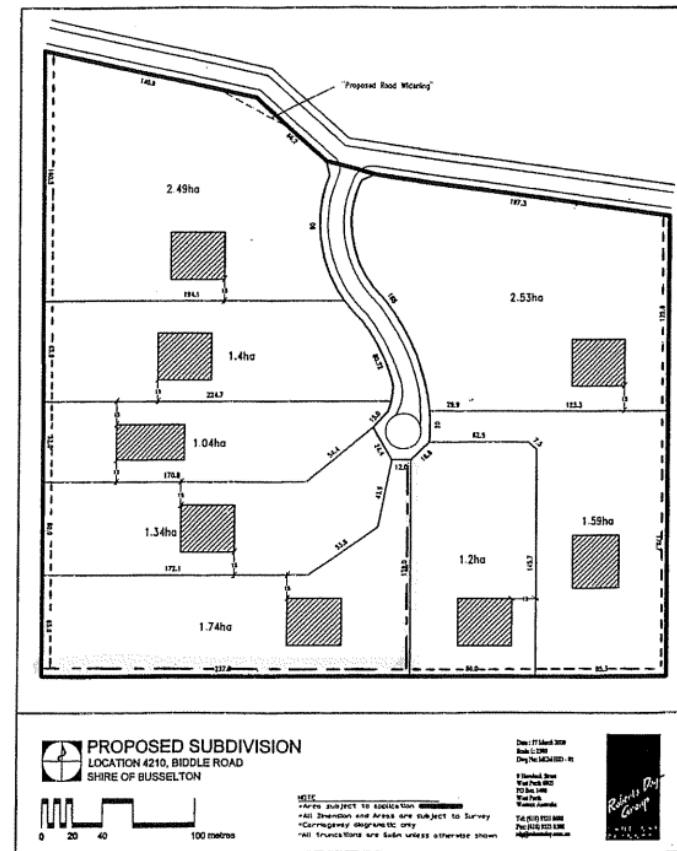
	<p><b>Lombo View South – 745m</b></p> <p>Gravel surface mostly clear of obstructions.</p> <p>Passable by 4x4 light and 4x4 Heavy. Steep hill may prove difficult for a 2wd to travel up (ie North to South)</p>
	<p><b>Hayes Road – 2616m</b></p> <p>Majority of track is by 4x4 light and heavy and possibly 2wds. Confirmation of track location required. Area highlighted in blue was driven but became inaccessible, however a 2<sup>nd</sup> track over the fence line to the south also exists. This was not driven but appears accessible.</p>

	<p><b>Glover Road – Vasse-Yallingup Siding - 684m</b></p> <p>Long straight section shown on image is a Gravel track accessible by 2wd vehicles 4x4 light and 4x4 heavy but could benefit from some clearing and uplifting to improve access. Other meandering section to the top right of image is useable and well maintained by local property owners</p> <p><b>Estimated 2 days of work \$15000</b></p>
	<p><b>Marrinup Drive to Commonage Road – 2601m</b></p> <p>Starting from Marrinup Drive the track runs along the inside of the property fencelines. It is essential unformed relative hard surface but a clear line is visible. It could be travelled by a 2wd vehicle but some soft spots were present. Gates are present between adjacent properties. About a 1km along a section of the track disappears into a stand of trees but access still possible through the trees or by going around to the NW. From approx. 1.4m the track enters an area of heavy native trees. The surface remains firm and there are a number of undocumented tracks running of it into private property.</p>



	<p>The sections of the track on the <b>Northern end running East to West for approx. 1.2kms requires some clearing and uplifting in places along the length.</b></p> <p><b>Estimated 4 Days work – \$35000</b></p>
	<p><b>Bronzewing Road to Quedjanup Dr - 1080m</b></p> <p>Starting at Bronzewing as a dirt track it meanders south a 2wd vehicle could potentially drive it but better suited to a 4x4 drive. It slowing reverts to a gravel surface.</p> <p>The short section of approx. 50m leads to an inaccessible area – an undocumented track is located approximately 15-20m further east but accessing it would be difficult. (Possible remove this section from map)</p> <p>A 90 degree corner and a gate on a 45 degree was difficult to pass through for a light vehicle and not possible for a heavy. The gravel surface continues to Quedjanup Dr and exits via a property driveway. Overall the track is only suitable for 4x4 Light vehicles.</p>

	 <p><b>PROPOSED SUBDIVISION</b> LOCATION 4210, BIDDLE ROAD SHIRE OF BUSSELTON</p> <p><b>LEGEND</b> ----- Strategic Firebreak – Public Access Way ----- Strategic Access Firebreak</p>	<p><b>Lochinvar Place to Biddle Road – 450m</b></p> <p>This is a short tack approximately 450m long starting at Lochinvar Place and ending on Biddle Road. It has a gravel surface suitable for 2wd access.</p> <p>The entire length is driveable but would benefit from some cutting back and uplift of vegetation. Particularly on the Southern length.</p> <p><b>Estimated 2 Days work - \$15000</b></p>
--	---	---



Biddle Road to near Berwick Pl – 400m
--

Gravel track passing through a number of private properties, accessible by 2wd, 4wd light and 4wd heavy vehicles.

Some minor clearing could be applied but otherwise is accessible.

**Estimated 2 days work**  
**\$15000**

### Legend for Firebreaks

Strategic Firebreak – Public Access Way  
Strategic Access Firebreak



## Autum Rise - 1065m

Access off Autumn Rise via an easement not recorded as a track on Intramaps or from Summer Br. The Western edge is lined by trees along fence line with a track/fire break meandering approx. 10m from the fence line (inside the easement) but otherwise serviceable.

Northern run crosses through multiple properties with some vegetation growing into the track requiring clearing.

**Estimated 2 days work. \$15000**





## 7 Next Meeting Date

The next meeting of the Bush Fire Advisory Committee will be held on Tuesday 10 September 2024

## 8 Closure