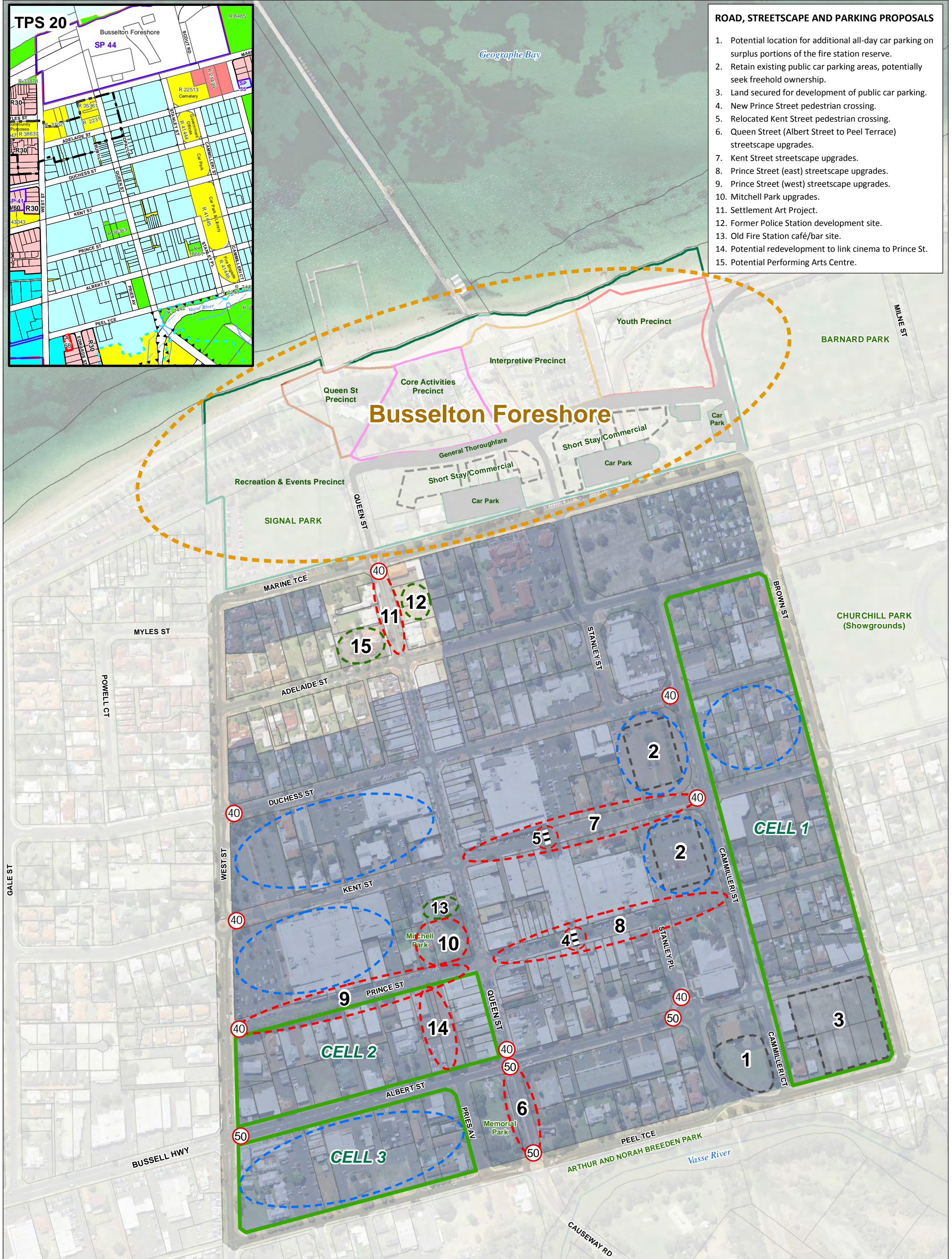


ROAD, STREETScape AND PARKING PROPOSALS

1. Potential location for additional all-day car parking on surplus portions of the fire station reserve.
2. Retain existing public car parking areas, potentially seek freehold ownership.
3. Land secured for development of public car parking.
4. New Prince Street pedestrian crossing.
5. Relocated Kent Street pedestrian crossing.
6. Queen Street (Albert Street to Peel Terrace) streetscape upgrades.
7. Kent Street streetscape upgrades.
8. Prince Street (east) streetscape upgrades.
9. Prince Street (west) streetscape upgrades.
10. Mitchell Park upgrades.
11. Settlement Art Project.
12. Former Police Station development site.
13. Old Fire Station café/bar site.
14. Potential redevelopment to link cinema to Prince St.
15. Potential Performing Arts Centre.



	Potential Location for Major Retail Development		Development/Redevelopment Cell. Require site-specific design guidance/integration.		Proposed 40 kph Speed Limit Area
	Priority Streetscape or Landscape Upgrade		Rezone to RAC-3		Proposed 50 kph Speed Limit Area
	Land to be Retained/Secured for Parking		Relocated or Proposed Zebra Crossing		
	Potential Development on City Managed Land		Cadastre		

Aerial photograph taken March 2013

Busselton City Centre Conceptual Plan



Disclaimer
The City of Busselton does not guarantee that this map is without errors and accepts no responsibility for consequences of actions that rely on this map.
Map Produced on 15/01/14
GIS Section, City of Busselton

V:\Projects\Busselton CBD Proposals 2013