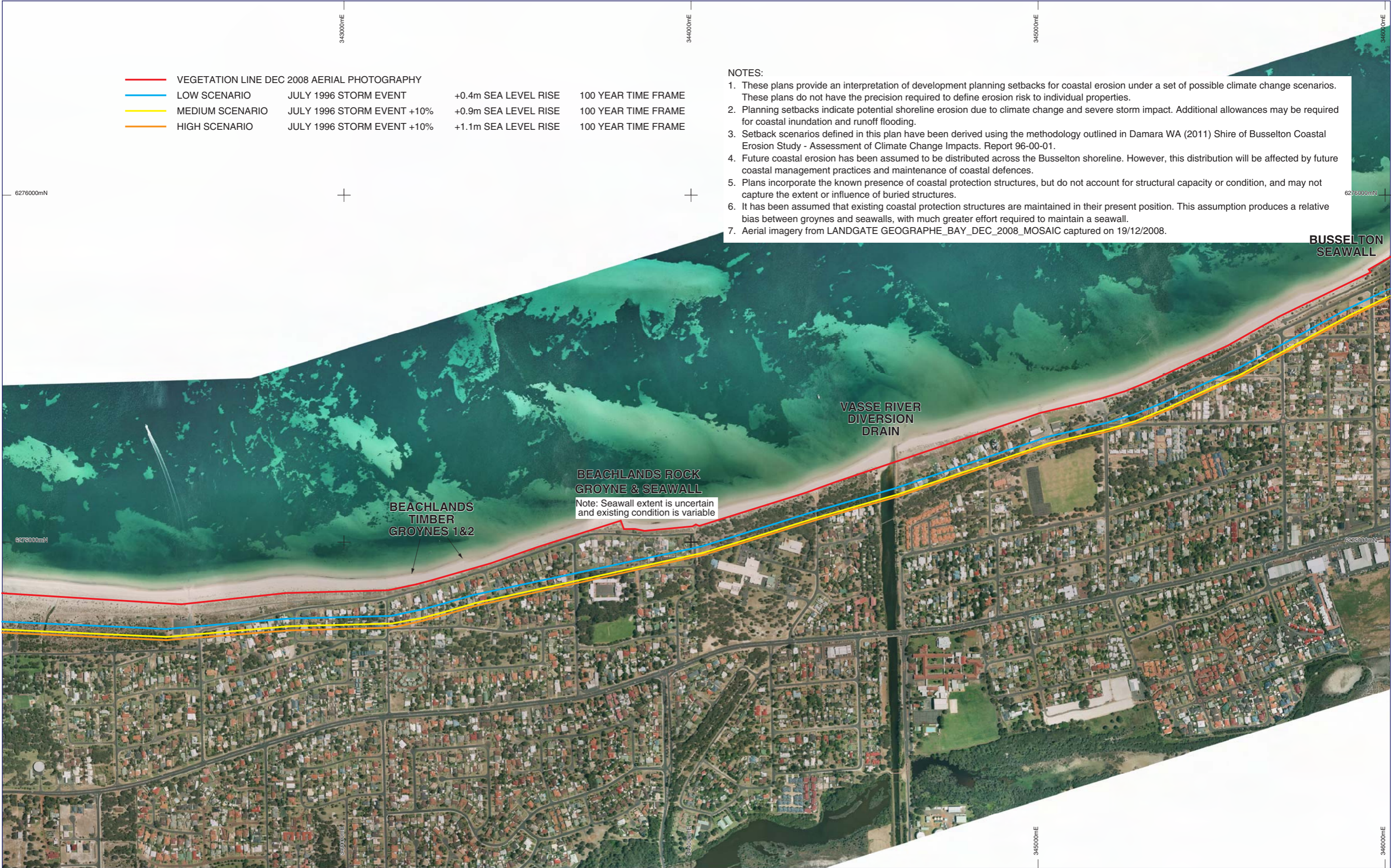


—	VEGETATION LINE DEC 2008 AERIAL PHOTOGRAPHY		
—	LOW SCENARIO	JULY 1996 STORM EVENT	+0.4m SEA LEVEL RISE 100 YEAR TIME FRAME
—	MEDIUM SCENARIO	JULY 1996 STORM EVENT +10%	+0.9m SEA LEVEL RISE 100 YEAR TIME FRAME
—	HIGH SCENARIO	JULY 1996 STORM EVENT +10%	+1.1m SEA LEVEL RISE 100 YEAR TIME FRAME

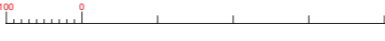
- NOTES:
1. These plans provide an interpretation of development planning setbacks for coastal erosion under a set of possible climate change scenarios. These plans do not have the precision required to define erosion risk to individual properties.
 2. Planning setbacks indicate potential shoreline erosion due to climate change and severe storm impact. Additional allowances may be required for coastal inundation and runoff flooding.
 3. Setback scenarios defined in this plan have been derived using the methodology outlined in Damara WA (2011) Shire of Busseton Coastal Erosion Study - Assessment of Climate Change Impacts. Report 96-00-01.
 4. Future coastal erosion has been assumed to be distributed across the Busseton shoreline. However, this distribution will be affected by future coastal management practices and maintenance of coastal defences.
 5. Plans incorporate the known presence of coastal protection structures, but do not account for structural capacity or condition, and may not capture the extent or influence of buried structures.
 6. It has been assumed that existing coastal protection structures are maintained in their present position. This assumption produces a relative bias between groynes and seawalls, with much greater effort required to maintain a seawall.
 7. Aerial imagery from LANDGATE GEOGRAPHE_BAY_DEC_2008_MOSAIC captured on 19/12/2008.



A	17/08/2011	INITIAL ISSUE FOR CLIENT REVIEW	SM		
REV#	DATE	AMENDMENT	DRN	DESIGN APPROVAL	
A3	DA-2044-2-6A.dgn				

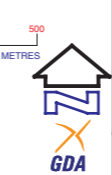
NOTES

SCALE 1 : 10000



DATUM
VERTICAL N/A

HORIZONTAL MAP GRID OF AUSTRALIA, BASED ON GDA94



ACTION	NAME	SIGNATURE	DATE
ENGINEER	G.McCormack		17/08/2011
DRAWN	S.Mouchemore		17/08/2011
ENGINEERING CHECK	M.Eliot		
CARTOGRAPHY CHECK	G.Bebbington		
APPROVED PROJECT MGR			

Damara WA Pty Ltd



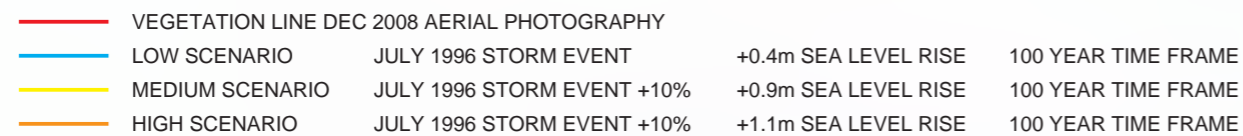
BEBBINGTON
CARTOGRAPHICS Pty Ltd

BUSSETON SHIRE
UNDEFENDED SETBACK LINES
BEACHLANDS

DRAWING NUMBER

DA 2044 - 2 - 6

REV# A



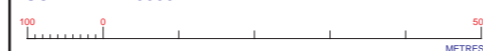
- NOTES:



C	22/03/2011	AMENDED SETBACKS AND ADDED NOTES			SM
B	15/02/2011	SMENDED SETBACKS			SM
A	12/10/2010	INITIAL ISSUE FOR CLIENT REVIEW			SM
REV/N	DATE	AMENDMENT			DRN DESIGN APPROVAL
ORIG SIZE A3	ARCHIVE DA-2044-1-6C.dgn	PROJECT No			

NOTES

SCALE 1 : 10000



DATUM	
VERTICAL	N/A

HORIZONTAL MAP GRID OF AUSTRALIA, BASED ON GDA94



ACTION	NAME	SIGNATURE	DATE
ENGINEER	G.McCormack		12/10/2019
DRAWN	S.Mouchemore		12/10/2019
ENGINEERING CHECK	M.Eliot		
CARTOGRAPHY CHECK	G.Bebbington		
APPROVED PROJECT MGR			

0 Damara WA Pty Ltd



BEBBCART

BEBBINGTON
CARTOGRAPHICS Pty Ltd

BUSSELTON SHIRE VEGETATION LINE AND SETBACKS BEACHLANDS

DRAWING NUMBER

DA 2044 - 1 - 6

C