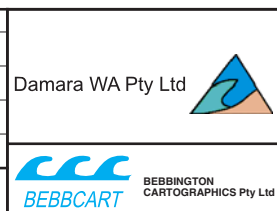
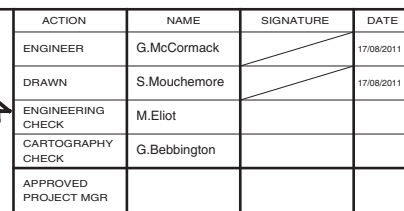


## SIESTA PARK GROUYNE

## LOCKE SWAMP DRAIN

## LOCKE ESTATE TIMBER GROYNES

## BUAYANUP DRAIN

[illegible]

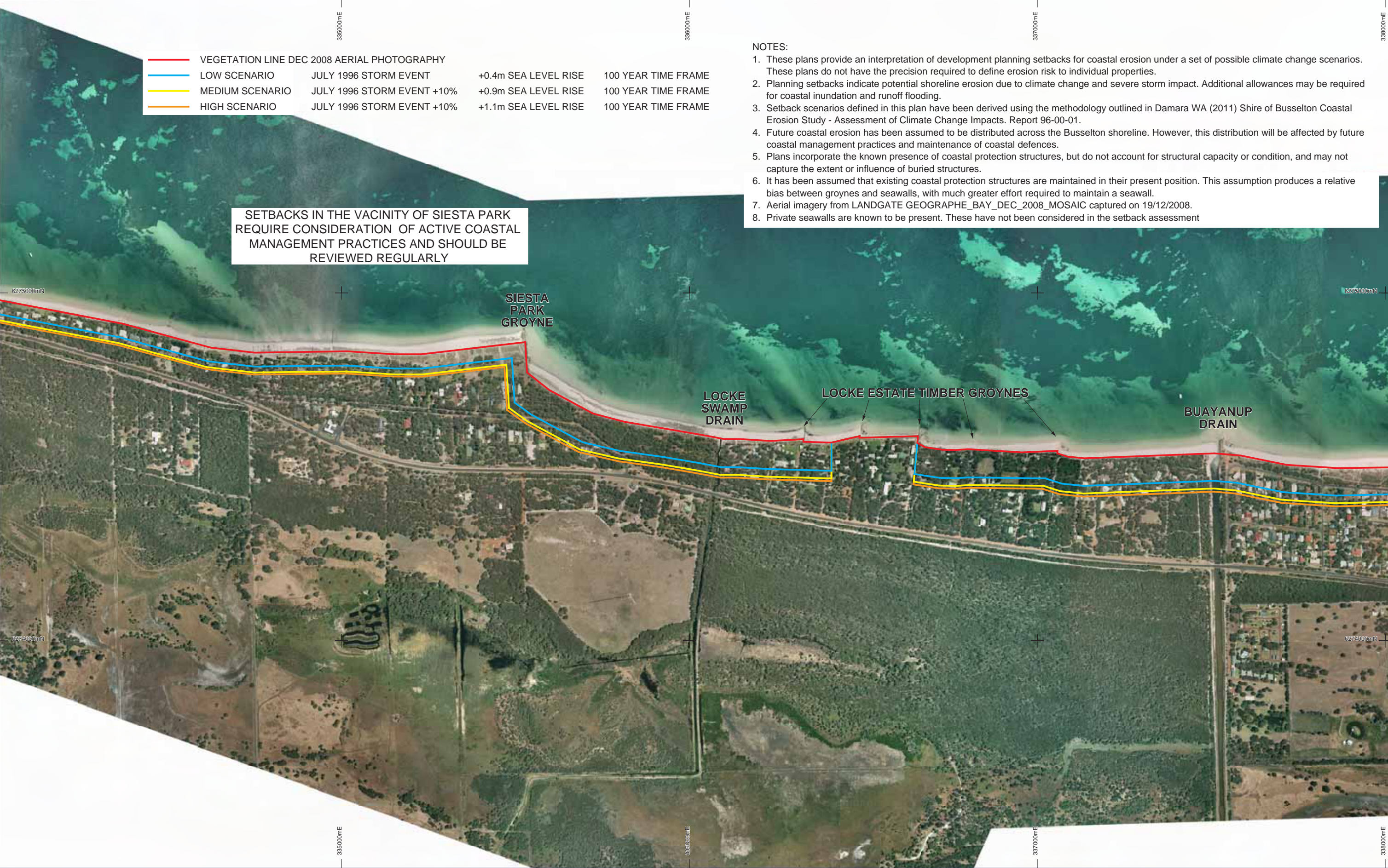
BUSSELTON SHIRE UNDEFENDED SETBACK LINES SIESTA PARK		REV# <b>A</b>
DRAWING NUMBER <b>DA 2044 - 2 - 4</b>		



—	VEGETATION LINE DEC 2008 AERIAL PHOTOGRAPHY			
—	LOW SCENARIO	JULY 1996 STORM EVENT	+0.4m SEA LEVEL RISE	100 YEAR TIME FRAME
—	MEDIUM SCENARIO	JULY 1996 STORM EVENT +10%	+0.9m SEA LEVEL RISE	100 YEAR TIME FRAME
—	HIGH SCENARIO	JULY 1996 STORM EVENT +10%	+1.1m SEA LEVEL RISE	100 YEAR TIME FRAME

- NOTES:
1. These plans provide an interpretation of development planning setbacks for coastal erosion under a set of possible climate change scenarios. These plans do not have the precision required to define erosion risk to individual properties.
  2. Planning setbacks indicate potential shoreline erosion due to climate change and severe storm impact. Additional allowances may be required for coastal inundation and runoff flooding.
  3. Setback scenarios defined in this plan have been derived using the methodology outlined in Damara WA (2011) Shire of Busselton Coastal Erosion Study - Assessment of Climate Change Impacts. Report 96-00-01.
  4. Future coastal erosion has been assumed to be distributed across the Busselton shoreline. However, this distribution will be affected by future coastal management practices and maintenance of coastal defences.
  5. Plans incorporate the known presence of coastal protection structures, but do not account for structural capacity or condition, and may not capture the extent or influence of buried structures.
  6. It has been assumed that existing coastal protection structures are maintained in their present position. This assumption produces a relative bias between groynes and seawalls, with much greater effort required to maintain a seawall.
  7. Aerial imagery from LANDGATE GEOGRAPHE\_BAY\_DEC\_2008\_MOSAIC captured on 19/12/2008.
  8. Private seawalls are known to be present. These have not been considered in the setback assessment

SETBACKS IN THE VICINITY OF SIESTA PARK  
REQUIRE CONSIDERATION OF ACTIVE COASTAL  
MANAGEMENT PRACTICES AND SHOULD BE  
REVIEWED REGULARLY



C	22/03/2011	AMENDED SETBACKS AND ADDED NOTES	SM		
B	15/02/2011	AMENDED SETBACKS	SM		
A	12/10/2010	INITIAL ISSUE FOR CLIENT REVIEW	SM		
REV#	DATE	AMENDMENT	DRN	DESIGN APPROVAL	
ORIG SIZE	ARCHIVE	PROJECT No			
A3	DA-2044-1-4C.dgn				

NOTES

SCALE 1 : 10000

DATUM  
VERTICAL N/A

HORIZONTAL MAP GRID OF AUSTRALIA, BASED ON GDA94

ACTION	NAME	SIGNATURE	DATE
ENGINEER	G.McCormack		12/10/2010
DRAWN	S.Mouchemore		12/10/2010
ENGINEERING CHECK	M.Eliot		
CARTOGRAPHY CHECK	G.Bebbington		
APPROVED PROJECT MGR			

BUSSELTON SHIRE  
VEGETATION LINE AND SETBACKS  
SIESTA PARK

DRAWING NUMBER DA 2044 - 1 - 4

REV# C