

A	17/08/2011	INITIAL ISSUE FOR CLIENT REVIEW		SM	
REV/N	DATE	AMENDMENT		D/RN	DESIGN APPROVAL
ORIG SIZE <b>A3</b>	ARCHIVE DA-2044-2-da_gn	PROJECT No:			

NOTES

SCALE 1 : 10000



DATUM	
VERTICAL	N/A

HORIZONTAL MAP GRID OF AUSTRALIA, BASED ON GDA94



ACTION	NAME	SIGNATURE	DATE
ENGINEER	G.McCormack		17/08/20
DRAWN	S.Mouchemore		17/08/20
ENGINEERING CHECK	M.Eliot		
CARTOGRAPHY CHECK	G.Bebbington		
APPROVED PROJECT MGR			

11 Damara WA Pty Ltd



BEBBCART

**BEBBINGTON**  
**CARTOGRAPHICS Pty Ltd**

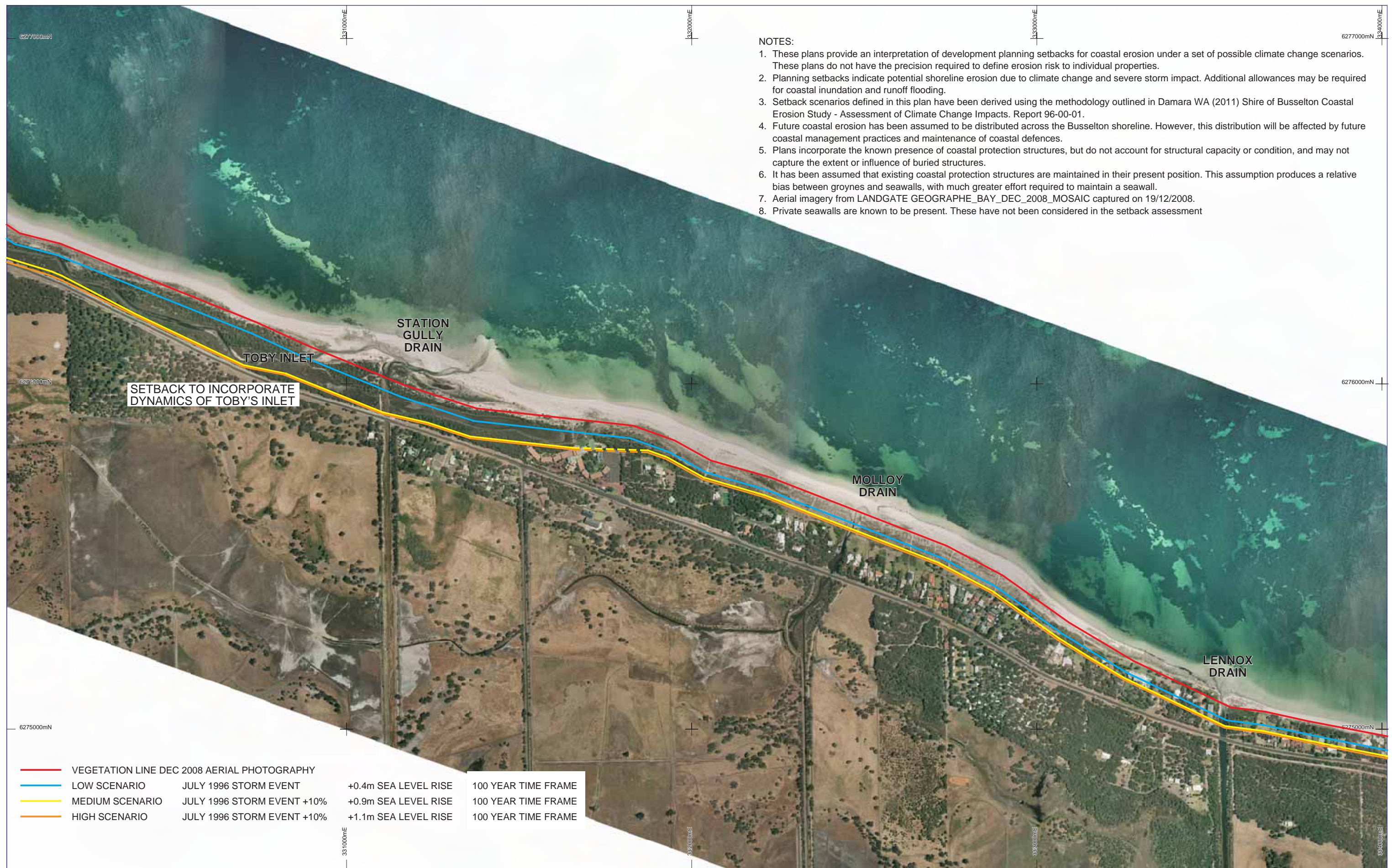
BUSSELTON SHIRE  
UNDEFENDED SETBACK LINES  
TOBY INLET - LENNOX DRAIN

DRAWING NUMBER

DA 2044 - 2 - 3

A

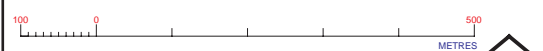




C	22/03/2011	AMENDED SETBACKS AND ADDED NOTES			SM
B	15/02/2011	AMENDED SETBACKS			SM
A	12/10/2010	INITIAL ISSUE FOR CLIENT REVIEW			SM
REV/N	DATE	AMENDMENT			D/RN DESIGN APPROVAL
ORIG SIZE <b>A3</b>	ARCHIVE DA-2044-I-3C.dgn	PROJECT No			

NOTES

SCALE 1 : 10000



DATUM	
VERTICAL	N/A

HORIZONTAL MAP GRID OF AUSTRALIA, BASED ON GDA94



ACTION	NAME	SIGNATURE	DATE
ENGINEER	G.McCormack		12/10/2019
DRAWN	S.Mouchemore		12/10/2019
ENGINEERING CHECK	M.Eliot		
CARTOGRAPHY CHECK	G.Bebbington		
APPROVED PROJECT MGR			

0 Damara WA Pty Ltd



BEBBCART

**BEBBINGTON  
CARTOGRAPHICS Pty Ltd**

## BUSSELTON SHIRE VEGETATION LINE AND SETBACKS TOBY INLET - LENNOX DRAIN

DRAWING NUMBER

DA 2044 - 1 - 3

C